

Datasheet for ABIN1320453

## SLC43A1 Protein (AA 212-297) (GST tag)



[Go to Product page](#)

### 1 Image

#### Overview

Quantity:	10 µg
Target:	SLC43A1
Protein Characteristics:	AA 212-297
Origin:	Human
Source:	Wheat germ
Protein Type:	Recombinant
Purification tag / Conjugate:	This SLC43A1 protein is labelled with GST tag.
Application:	ELISA, Western Blotting (WB), Affinity Purification (AP), Antibody Array (AA)

#### Product Details

Purpose:	SLC43A1 (Human) Recombinant Protein (Q01)
Sequence:	NCTLNWPIEA FPAPEEVNYT KKIKLSGLAL DHKVTGDLFY THVTTMGQRL SQKAPSLEDG SDAFMSPQDV RGTSENLPER SVPLRK
Characteristics:	Human SLC43A1 partial ORF ( NP_003618.1, 212 a.a. - 297 a.a.) recombinant protein with GST-tag at N-terminal.
Purification:	in vitro wheat germ expression system

#### Target Details

Target:	SLC43A1
Alternative Name:	SLC43A1 ( <a href="#">SLC43A1 Products</a> )

## Target Details

Background: Full Gene Name: solute carrier family 43, member 1  
Synonyms: LAT3,PB39,POV1,R00504

Gene ID: 8501

NCBI Accession: [NM\\_003627](#)

## Application Details

Application Notes: Optimal working dilution should be determined by the investigator.

Comment: Preparation method: in vitro, wheat germ expression system  
Product Quality tested by: 12.5% SDS-PAGE Stained with Coomassie Blue.

Restrictions: For Research Use only

## Handling

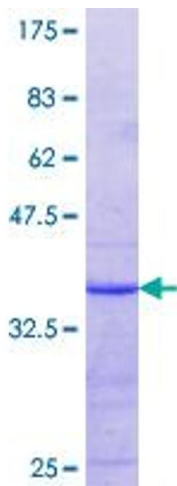
Buffer: 50 mM Tris-HCl, 10 mM reduced Glutathione, pH =8.0 in the elution buffer.

Handling Advice: Aliquot to avoid repeated freezing and thawing.

Storage: -80 °C

Storage Comment: Best use within three months from the date of receipt of this protein.

## Images



**Image 1.**