



[Go to Product page](#)

Datasheet for ABIN1320472

NADAP Protein (AA 154-254) (GST tag)

1 Image

Overview

Quantity:	10 µg
Target:	NADAP (SLC4A1AP)
Protein Characteristics:	AA 154-254
Origin:	Human
Source:	Wheat germ
Protein Type:	Recombinant
Purification tag / Conjugate:	This NADAP protein is labelled with GST tag.
Application:	ELISA, Western Blotting (WB), Affinity Purification (AP), Antibody Array (AA)

Product Details

Purpose:	SLC4A1AP (Human) Recombinant Protein (Q01)
Sequence:	YQEPPWGGPA TAPYSLETLK GGTILGTRSL KGTSYCLFGR LSGCDVCLEH PSVSRYPHAVL QHRASGPDGE CDSNGPGFYL YDLGSTHGTF LNKTRIPRPT Y
Characteristics:	Human SLC4A1AP partial ORF (NP_060628, 154 a.a. - 254 a.a.) recombinant protein with GST-tag at N-terminal.
Purification:	in vitro wheat germ expression system

Target Details

Target:	NADAP (SLC4A1AP)
Alternative Name:	SLC4A1AP (SLC4A1AP Products)

Target Details

Background:	Full Gene Name: solute carrier family 4 (anion exchanger), member 1, adaptor protein Synonyms: FLJ10624,FLJ41004,HLC3,MGC120646,MGC120648
Gene ID:	22950
NCBI Accession:	NM_018158

Application Details

Application Notes:	Optimal working dilution should be determined by the investigator.
Comment:	Preparation method: in vitro, wheat germ expression system Product Quality tested by: 12.5% SDS-PAGE Stained with Coomassie Blue.
Restrictions:	For Research Use only

Handling

Buffer:	50 mM Tris-HCl, 10 mM reduced Glutathione, pH =8.0 in the elution buffer.
Handling Advice:	Aliquot to avoid repeated freezing and thawing.
Storage:	-80 °C
Storage Comment:	Best use within three months from the date of receipt of this protein.

Images

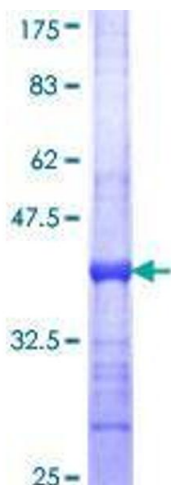


Image 1.