

Datasheet for ABIN1320491

SLC6A11 Protein (AA 164-225) (GST tag)[Go to Product page](#)**1** Image

Overview

| | |
|-------------------------------|---|
| Quantity: | 10 µg |
| Target: | SLC6A11 |
| Protein Characteristics: | AA 164-225 |
| Origin: | Human |
| Source: | Wheat germ |
| Protein Type: | Recombinant |
| Purification tag / Conjugate: | This SLC6A11 protein is labelled with GST tag. |
| Application: | ELISA, Western Blotting (WB), Affinity Purification (AP), Antibody Array (AA) |

Product Details

| | |
|------------------|---|
| Purpose: | SLC6A11 (Human) Recombinant Protein (Q01) |
| Sequence: | TELPWATCGH EWNTENCVEF QKLNVSNYSH VSLQNATSPV MEFWEHRVLA ISDGIEHIGH LR |
| Characteristics: | Human SLC6A11 partial ORF (NP_055044.1, 164 a.a. - 225 a.a.) recombinant protein with GST-tag at N-terminal. |
| Purification: | in vitro wheat germ expression system |

Target Details

| | |
|-------------------|---|
| Target: | SLC6A11 |
| Alternative Name: | SLC6A11 (SLC6A11 Products) |
| Background: | Full Gene Name: solute carrier family 6 (neurotransmitter transporter, GABA), member 11 |

Target Details

| | |
|-----------------|---------------------------|
| | Synonyms: GAT-3,GAT3 |
| Gene ID: | 6538 |
| NCBI Accession: | NM_014229 |

Application Details

| | |
|--------------------|--|
| Application Notes: | Optimal working dilution should be determined by the investigator. |
| Comment: | Preparation method: in vitro, wheat germ expression system Product Quality tested by: 12.5% SDS-PAGE Stained with Coomassie Blue. |
| Restrictions: | For Research Use only |

Handling

| | |
|------------------|---|
| Buffer: | 50 mM Tris-HCl, 10 mM reduced Glutathione, pH =8.0 in the elution buffer. |
| Handling Advice: | Aliquot to avoid repeated freezing and thawing. |
| Storage: | -80 °C |
| Storage Comment: | Best use within three months from the date of receipt of this protein. |

Images

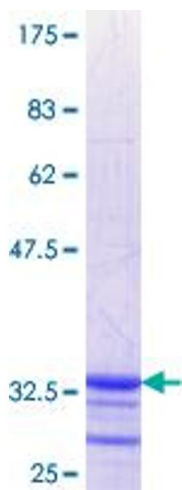


Image 1.