

Datasheet for ABIN1320498

**SLC6A16 Protein (AA 406-492) (GST tag)**[Go to Product page](#)**1** Image

## Overview

Quantity:	10 µg
Target:	SLC6A16
Protein Characteristics:	AA 406-492
Origin:	Human
Source:	Wheat germ
Protein Type:	Recombinant
Purification tag / Conjugate:	This SLC6A16 protein is labelled with GST tag.
Application:	ELISA, Western Blotting (WB), Affinity Purification (AP), Antibody Array (AA)

## Product Details

Purpose:	SLC6A16 (Human) Recombinant Protein (Q01)
Sequence:	RCCERNAEIL LKLINLGKLP PDAKPPVNLL YNPTSIYNAW LSGLPQHIKS MVLREVTECN IETQFLKASE GPKFAFLSFV EAMSFLP
Characteristics:	Human SLC6A16 partial ORF ( NP_054756.2, 406 a.a. - 492 a.a.) recombinant protein with GST-tag at N-terminal.
Purification:	in vitro wheat germ expression system

## Target Details

Target:	SLC6A16
Alternative Name:	SLC6A16 ( <a href="#">SLC6A16 Products</a> )

Target Details

Background:	Full Gene Name: solute carrier family 6, member 16 Synonyms: NTT5
Gene ID:	28968
NCBI Accession:	<a href="#">NM_014037</a>

Application Details

Application Notes:	Optimal working dilution should be determined by the investigator.
Comment:	Preparation method: in vitro, wheat germ expression system Product Quality tested by: 12.5% SDS-PAGE Stained with Coomassie Blue.
Restrictions:	For Research Use only

Handling

Buffer:	50 mM Tris-HCl, 10 mM reduced Glutathione, pH =8.0 in the elution buffer.
Handling Advice:	Aliquot to avoid repeated freezing and thawing.
Storage:	-80 °C
Storage Comment:	Best use within three months from the date of receipt of this protein.

Images

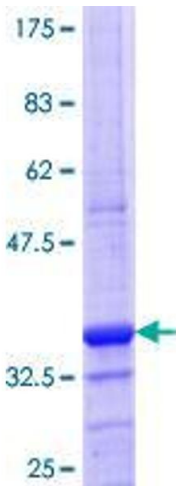


Image 1.