

Datasheet for ABIN1320539

## SLC9A1 Protein (AA 31-130) (GST tag)



[Go to Product page](#)

### 1 Image

#### Overview

Quantity:	10 µg
Target:	SLC9A1
Protein Characteristics:	AA 31-130
Origin:	Human
Source:	Wheat germ
Protein Type:	Recombinant
Purification tag / Conjugate:	This SLC9A1 protein is labelled with GST tag.
Application:	Western Blotting (WB), ELISA, Affinity Purification (AP), Antibody Array (AA)

#### Product Details

Purpose:	SLC9A1 (Human) Recombinant Protein (Q01)
Sequence:	VLRSHGLQLS PTASTIRSSE PPRERSIGDV TTAPEVTPE SRPVNHSVTD HGMKPRKAFP VLGIDYTHVR TPFEISLWIL LACLMKIGFH VIPTISSIVP
Characteristics:	Human SLC9A1 partial ORF ( AAH12121, 31 a.a. - 130 a.a.) recombinant protein with GST-tag at N-terminal.
Purification:	in vitro wheat germ expression system

#### Target Details

Target:	SLC9A1
Alternative Name:	SLC9A1 ( <a href="#">SLC9A1 Products</a> )

## Target Details

Background:	Full Gene Name: solute carrier family 9 (sodium/hydrogen exchanger), member 1 Synonyms: APNH,FLJ42224,NHE1
Gene ID:	6548
Pathways:	<a href="#">Glycosaminoglycan Metabolic Process</a> , <a href="#">Proton Transport</a>

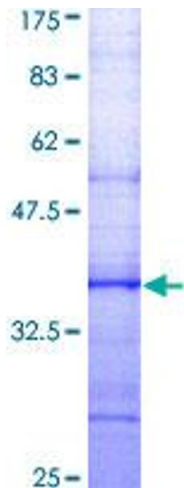
## Application Details

Application Notes:	Optimal working dilution should be determined by the investigator.
Comment:	Preparation method: in vitro, wheat germ expression system Product Quality tested by: 12.5% SDS-PAGE Stained with Coomassie Blue.
Restrictions:	For Research Use only

## Handling

Buffer:	50 mM Tris-HCl, 10 mM reduced Glutathione, pH =8.0 in the elution buffer.
Handling Advice:	Aliquot to avoid repeated freezing and thawing.
Storage:	-80 °C
Storage Comment:	Best use within three months from the date of receipt of this protein.

## Images



**Image 1.**