



[Go to Product page](#)

Datasheet for ABIN1320541

SLC9A3 Protein (AA 670-779) (GST tag)

1 Image

Overview

| | |
|-------------------------------|---|
| Quantity: | 10 µg |
| Target: | SLC9A3 |
| Protein Characteristics: | AA 670-779 |
| Origin: | Human |
| Source: | Wheat germ |
| Protein Type: | Recombinant |
| Purification tag / Conjugate: | This SLC9A3 protein is labelled with GST tag. |
| Application: | Western Blotting (WB), ELISA, Affinity Purification (AP), Antibody Array (AA) |

Product Details

| | |
|------------------|--|
| Purpose: | SLC9A3 (Human) Recombinant Protein (Q01) |
| Sequence: | GLNQNKKA AK LYKRERAQKR RNSSIPNGKL PMESPAQNFT IKEKDLELSD TEEPPNYDEE MSGGIEFLAS VTKDTASDSP AGIDNPVFSP DEALDRSLLA RLPPWLSPGE |
| Characteristics: | Human SLC9A3 partial ORF (NP_004165.2, 670 a.a. - 779 a.a.) recombinant protein with GST-tag at N-terminal. |
| Purification: | in vitro wheat germ expression system |

Target Details

| | |
|-------------------|--|
| Target: | SLC9A3 |
| Alternative Name: | SLC9A3 (SLC9A3 Products) |

Target Details

| | |
|-----------------|---|
| Background: | Full Gene Name: solute carrier family 9 (sodium/hydrogen exchanger), member 3 Synonyms: MGC126718,MGC126720,NHE3 |
| Gene ID: | 6550 |
| NCBI Accession: | NM_004174 |
| Pathways: | Proton Transport |

Application Details

| | |
|--------------------|---|
| Application Notes: | Optimal working dilution should be determined by the investigator. |
| Comment: | Preparation method: in vitro, wheat germ expression system Product Quality tested by: 12.5% SDS-PAGE Stained with Coomassie Blue |
| Restrictions: | For Research Use only |

Handling

| | |
|------------------|---|
| Buffer: | 50 mM Tris-HCl, 10 mM reduced Glutathione, pH =8.0 in the elution buffer. |
| Handling Advice: | Aliquot to avoid repeated freezing and thawing. |
| Storage: | -80 °C |
| Storage Comment: | Best use within three months from the date of receipt of this protein. |

Images

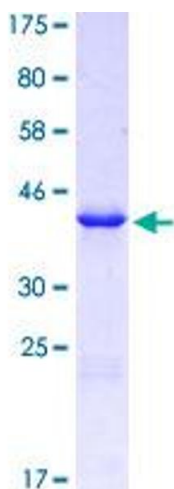


Image 1.