



Datasheet for ABIN1320545

SLC9A3R1 Protein (AA 252-358) (GST tag)



[Go to Product page](#)

1 Image

Overview

Quantity:	10 µg
Target:	SLC9A3R1
Protein Characteristics:	AA 252-358
Origin:	Human
Source:	Wheat germ
Protein Type:	Recombinant
Purification tag / Conjugate:	This SLC9A3R1 protein is labelled with GST tag.
Application:	ELISA, Western Blotting (WB), Affinity Purification (AP), Antibody Array (AA)

Product Details

Purpose:	SLC9A3R1 (Human) Recombinant Protein (Q01)
Sequence:	NGPLPVPFTN GEIQKENSRE ALAEAALESP RPALVRSASS DTSEELNSQD SPPKQDSTAP SSTSSSDPIL DFNISLAMAK ERAHQKRSSK RAPQMDWSKK NELFSNL
Characteristics:	Human SLC9A3R1 partial ORF (NP_004243.1, 252 a.a. - 358 a.a.) recombinant protein with GST-tag at N-terminal.
Purification:	in vitro wheat germ expression system

Target Details

Target:	SLC9A3R1
Alternative Name:	SLC9A3R1 (SLC9A3R1 Products)

Target Details

Background:	Full Gene Name: solute carrier family 9 (sodium/hydrogen exchanger), member 3 regulator 1 Synonyms: EBP50,NHERF,NHERF1,NPHLOP2
Gene ID:	9368
NCBI Accession:	NM_004252
Pathways:	Proton Transport , Platelet-derived growth Factor Receptor Signaling , Negative Regulation of Transporter Activity , SARS-CoV-2 Protein Interactome

Application Details

Application Notes:	Optimal working dilution should be determined by the investigator.
Comment:	Preparation method: in vitro, wheat germ expression system Product Quality tested by: 12.5% SDS-PAGE Stained with Coomassie Blue.
Restrictions:	For Research Use only

Handling

Buffer:	50 mM Tris-HCl, 10 mM reduced Glutathione, pH =8.0 in the elution buffer.
Handling Advice:	Aliquot to avoid repeated freezing and thawing.
Storage:	-80 °C
Storage Comment:	Best use within three months from the date of receipt of this protein.

Images

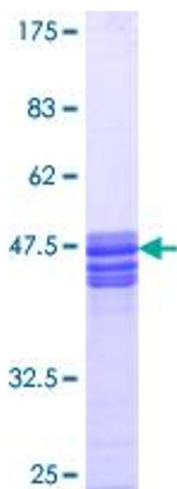


Image 1.