

Datasheet for ABIN1320559  
**SLFN11 Protein (AA 1-901) (GST tag)**



[Go to Product page](#)

1 Image

Overview

Quantity:	10 µg
Target:	SLFN11
Protein Characteristics:	AA 1-901
Origin:	Human
Source:	Wheat germ
Protein Type:	Recombinant
Purification tag / Conjugate:	This SLFN11 protein is labelled with GST tag.
Application:	ELISA, Western Blotting (WB), Affinity Purification (AP), Antibody Array (AA)

Product Details

Purpose:	SLFN11 (Human) Recombinant Protein (P01)
Sequence:	<p>MEANQCPLVW EPSYDPLVIN VGEVTLGEEN RKKLQKIQRD QEKERVMAA CALLNSGGGV</p> <p>IRMAKKVEHP VEMGLDLEQS LRELIQSSDL QAFFETKQQG RCFYIFVKSX SSGPFPEDRS</p> <p>VKPRCLSLSS SLYRRSETSV RSMDSREAFK FLKTKRKPPI LEEGPFHKIH KGVYQELPNS</p> <p>DPADPNSDPA DLIFQKDYLE YGEILPFPES QLVEFKQFST KHFEYVVKRT IPEYVPAFAN</p> <p>TGGGYLFIGV DDKSREVLGC AKENVDPDSL RRKIEQAIYK LPCVHFCQPQ RPITFTLKIV</p> <p>DVLKRGELYG YACMIRVNPFC CAVFSEAPN SWIVEDKYVC SLTTEKWVGM MTDTDPDLLQ</p> <p>LSEDFECQLS LSSGPPLSRP VYSKKGLEHK KELQQLFSV PPGYLRYTPE SLWRDLISEH</p> <p>RGLEELINKQ MQPFFRGILI FSRSWAVDLN LQEKPGVICD ALLIAQNSTP ILYTILREQD</p> <p>AEGQDYCTRT AFTLKQQLVN MGGYTGKVCV RAKVLCLSPE SSAEALEAAV SPMDYPASYS</p> <p>LGTQHMAL LQSLVIVLLG FRLLSDQLG CEVLNLLTAQ QYEIFSRSLR KNRELFVHGL</p> <p>PGSGKTIMAM KIMEKIRNVF HCEAHRILYV CENQPLRNFI SDRNICRAET RKTFLRENFE</p>

## Product Details

---

HIQHIVIDEA QNFRTEGDW YGKAKSITRR AKGGPGILWI FLDYFQTSHL DCSGLPPLSD  
QYPREELTRI VRNADPIAKY LQKEMQVIRS NPSFNIPTGC LEVFPAAEWS QGVQGTLRK  
KYLTVEQIMT CVADTCRRFF DRGYSPKDVA VLVSTAKEVE HYKYELLKAM RKKRVVQLSD  
ACDMLGDHIV LDSVRRFSG LERSIVFGIHP RTADPAILPN VLICLASRAK QHLYIFPWGG H

Characteristics: Human SLFN11 full-length ORF ( AAH52586.1, 1 a.a. - 901 a.a.) recombinant protein with GST-tag at N-terminal.

Purification: in vitro wheat germ expression system

## Target Details

---

Target: SLFN11

Alternative Name: SLFN11 ([SLFN11 Products](#))

Background: Full Gene Name: schlafen family member 11  
Synonyms: FLJ34922,SLFN8/9

Gene ID: 91607

## Application Details

---

Application Notes: Optimal working dilution should be determined by the investigator.

Comment: Preparation method: in vitro, wheat germ expression system  
Product Quality tested by: 12.5% SDS-PAGE Stained with Coomassie Blue.

Restrictions: For Research Use only

## Handling

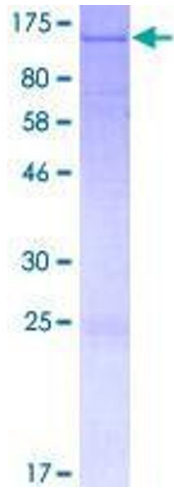
---

Buffer: 50 mM Tris-HCl, 10 mM reduced Glutathione, pH =8.0 in the elution buffer.

Handling Advice: Aliquot to avoid repeated freezing and thawing.

Storage: -80 °C

Storage Comment: Best use within three months from the date of receipt of this protein.



**Image 1.**