



[Go to Product page](#)

Datasheet for ABIN1320566

SLIT3 Protein (AA 1371-1470) (GST tag)

1 Image

Overview

Quantity:	10 µg
Target:	SLIT3
Protein Characteristics:	AA 1371-1470
Origin:	Human
Source:	Wheat germ
Protein Type:	Recombinant
Purification tag / Conjugate:	This SLIT3 protein is labelled with GST tag.
Application:	Western Blotting (WB), ELISA, Affinity Purification (AP), Antibody Array (AA)

Product Details

Purpose:	SLIT3 (Human) Recombinant Protein (Q01)
Sequence:	PCLGHRCHHG KCVATGTSYM CKCAEGYGGD LCDNKND SAN ACSAFKCHHG QCHISDQGEP YCLCQPGFSG EHCQQENPCL GQVVREVIRR QKGYASCATA
Characteristics:	Human SLIT3 partial ORF (NP_003053, 1371 a.a. - 1470 a.a.) recombinant protein with GST-tag at N-terminal.
Purification:	in vitro wheat germ expression system

Target Details

Target:	SLIT3
Alternative Name:	SLIT3 (SLIT3 Products)

Target Details

Background:	Full Gene Name: slit homolog 3 (Drosophila) Synonyms: FLJ10764,MEGF5,SLIL2,SLIT1,Slit-3,slit2
Gene ID:	6586
NCBI Accession:	NM_003062
Pathways:	Regulation of Cell Size

Application Details

Application Notes:	Optimal working dilution should be determined by the investigator.
Comment:	Preparation method: in vitro, wheat germ expression system Product Quality tested by: 12.5% SDS-PAGE Stained with Coomassie Blue.
Restrictions:	For Research Use only

Handling

Buffer:	50 mM Tris-HCl, 10 mM reduced Glutathione, pH =8.0 in the elution buffer.
Handling Advice:	Aliquot to avoid repeated freezing and thawing.
Storage:	-80 °C
Storage Comment:	Best use within three months from the date of receipt of this protein.

Images

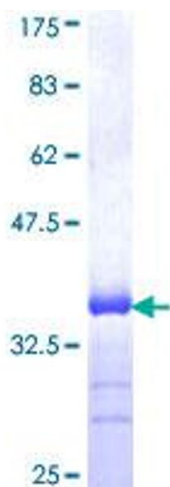


Image 1.