



[Go to Product page](#)

Datasheet for ABIN1320568

SLK Protein (AA 1126-1235) (GST tag)

1 Image

Overview

Quantity:	10 µg
Target:	SLK
Protein Characteristics:	AA 1126-1235
Origin:	Human
Source:	Wheat germ
Protein Type:	Recombinant
Purification tag / Conjugate:	This SLK protein is labelled with GST tag.
Application:	ELISA, Western Blotting (WB), Affinity Purification (AP), Antibody Array (AA)

Product Details

Purpose:	SLK (Human) Recombinant Protein (Q01)
Sequence:	KHENQMRDLQ LQCEANVREL HQLQNEKCHL LVEHETQKLK ELDEEHSQEL KEWREKLRPR KKTLEEEFAR KLQEQEVFFK MTGESECLNP STQSRISKFY PIPSLHSTGS
Characteristics:	Human SLK partial ORF (NP_055535, 1126 a.a. - 1235 a.a.) recombinant protein with GST-tag at N-terminal.
Purification:	in vitro wheat germ expression system

Target Details

Target:	SLK
Alternative Name:	SLK (SLK Products)

Target Details

Background:	Full Gene Name: STE20-like kinase (yeast) Synonyms: KIAA0204, LOSK, MGC133067, STK2, bA16H23.1, se20-9
Gene ID:	9748
NCBI Accession:	NM_014720

Application Details

Application Notes:	Optimal working dilution should be determined by the investigator.
Comment:	Preparation method: in vitro, wheat germ expression system Product Quality tested by: 12.5% SDS-PAGE Stained with Coomassie Blue.
Restrictions:	For Research Use only

Handling

Buffer:	50 mM Tris-HCl, 10 mM reduced Glutathione, pH =8.0 in the elution buffer.
Handling Advice:	Aliquot to avoid repeated freezing and thawing.
Storage:	-80 °C
Storage Comment:	Best use within three months from the date of receipt of this protein.

Images

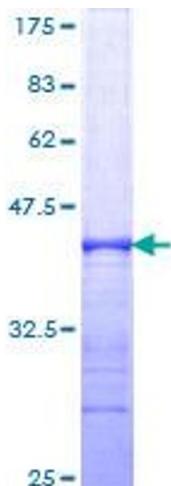


Image 1.