



[Go to Product page](#)

Datasheet for ABIN1320614

## SMAD7 Protein (AA 160-260) (GST tag)

### 1 Image

#### Overview

Quantity:	10 µg
Target:	SMAD7
Protein Characteristics:	AA 160-260
Origin:	Human
Source:	Wheat germ
Protein Type:	Recombinant
Purification tag / Conjugate:	This SMAD7 protein is labelled with GST tag.
Application:	Western Blotting (WB), ELISA, Affinity Purification (AP), Antibody Array (AA)

#### Product Details

Purpose:	SMAD7 (Human) Recombinant Protein (Q01)
Sequence:	CKVFRWPDLR HSSEVKRLCC CESYGKINPE LVCCNPHHLS RLCELESPPP PYSRYPMDFL KPTADCPDAV PSSAETGGTN YLAPGGLSDS QLLLEPGDRS H
Characteristics:	Human SMAD7 partial ORF ( NP_005895, 160 a.a. - 260 a.a.) recombinant protein with GST-tag at N-terminal.
Purification:	in vitro wheat germ expression system

#### Target Details

Target:	SMAD7
Alternative Name:	SMAD7 ( <a href="#">SMAD7 Products</a> )

## Target Details

Background:	Full Gene Name: SMAD family member 7 Synonyms: CRCS3,FLJ16482,MADH7,MADH8
Gene ID:	4092
NCBI Accession:	<a href="#">NM_005904</a>
Pathways:	<a href="#">Interferon-gamma Pathway</a> , <a href="#">Cell-Cell Junction Organization</a>

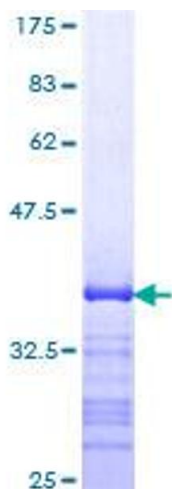
## Application Details

Application Notes:	Optimal working dilution should be determined by the investigator.
Comment:	Preparation method: in vitro, wheat germ expression system Product Quality tested by: 12.5% SDS-PAGE Stained with Coomassie Blue.
Restrictions:	For Research Use only

## Handling

Buffer:	50 mM Tris-HCl, 10 mM reduced Glutathione, pH =8.0 in the elution buffer.
Handling Advice:	Aliquot to avoid repeated freezing and thawing.
Storage:	-80 °C
Storage Comment:	Best use within three months from the date of receipt of this protein.

## Images



**Image 1.**