



[Go to Product page](#)

Datasheet for ABIN1320618

SMAP1 Protein (AA 1-440) (GST tag)

1 Image

Overview

Quantity:	10 µg
Target:	SMAP1
Protein Characteristics:	AA 1-440
Origin:	Human
Source:	Wheat germ
Protein Type:	Recombinant
Purification tag / Conjugate:	This SMAP1 protein is labelled with GST tag.
Application:	ELISA, Western Blotting (WB), Affinity Purification (AP), Antibody Array (AA)

Product Details

Purpose:	SMAP1 (Human) Recombinant Protein (P01)
Sequence:	MATRSCREKA QKLNEQHQLI LSKLLREEDN KYCADCEAKG PRWASWNIGV FICIRCAGIH RNLGVHISRV KSVNLDQWTA EQIQCMQDMG NTKARLLYEA NLPENFRRPQ TDQAVEFFIR DKYEKKKYD KNAIAITNKE KEKKKKEEKKR EKEPEKPAKP LTAEKLQKKD QQLEPKKSTS PKKAAEPTVD LLGLDGPAVA PVTNGNTTVP PLNDDLDIFG PMISNPLPAT VMPPAQGTPS APAAATLSTV TSGDLDFTE QTTKSEEVAK KQLSKDSILS LYGTGTIQQQ STPGVFMGPT NIPFTSQAPA AFQGFPSMGV PVPAAPGLIG NVMGQSPSMM VGMPMPNGFM GNAQTGV MPL PQNVVGPQGG MVGQMGAPQS KFGLPQAQQP QWSLSQMNQQ MAGMSISSAT PTAGFGQPSS TTAGWSGSSS GQTLSTQLWK
Characteristics:	Human SMAP1 full-length ORF (NP_068759.2, 1 a.a. - 440 a.a.) recombinant protein with GST-tag at N-terminal.

Product Details

Purification: in vitro wheat germ expression system

Target Details

Target: SMAP1

Alternative Name: SMAP1 ([SMAP1 Products](#))

Background: Full Gene Name: small ArfGAP 1
Synonyms: FLJ13159,FLJ42245,SMAP-1

Gene ID: 60682

NCBI Accession: [NM_021940](#)

Application Details

Application Notes: Optimal working dilution should be determined by the investigator.

Comment: Preparation method: in vitro, wheat germ expression system
Product Quality tested by: 12.5% SDS-PAGE Stained with Coomassie Blue.

Restrictions: For Research Use only

Handling

Buffer: 50 mM Tris-HCl, 10 mM reduced Glutathione, pH =8.0 in the elution buffer.

Handling Advice: Aliquot to avoid repeated freezing and thawing.

Storage: -80 °C

Storage Comment: Best use within three months from the date of receipt of this protein.

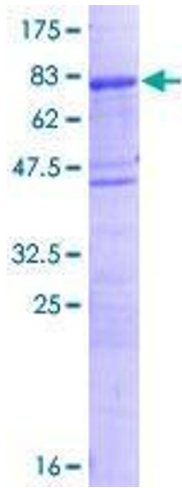


Image 1.