



[Go to Product page](#)

Datasheet for ABIN1320620

## SMAP2 Protein (AA 1-429) (GST tag)

### 1 Image

#### Overview

Quantity:	25 µg
Target:	SMAP2
Protein Characteristics:	AA 1-429
Origin:	Human
Source:	Wheat germ
Protein Type:	Recombinant
Purification tag / Conjugate:	This SMAP2 protein is labelled with GST tag.
Application:	ELISA, Western Blotting (WB), Affinity Purification (AP), Antibody Array (AA)

#### Product Details

Purpose:	SMAP1L (Human) Recombinant Protein (P01)
Sequence:	MTGKSVKDVD RYQAVLANLL LEEDNKFCAD CQSKGPRWAS WNIGVFICIR CAGIHRNLGV HISRVKSVNL DQWTQEQIQC MQEMGNGKAN RLYEAYLPET FRRPQIDPAV EGFIRDKYEK KKYMDRSLDI NAFRKEKDDK WKRGSSEVPE KKLEPVVFEK VKMPQKKEDP QLPRKSSPKS TAPVMDLLGL DAPVACSIAN SKTSNTLEKD LDLLASVPSP SSSGSRKVVG SMPTAGSAGS VPENLNLFPPE PGSKSEEIGK KQLSKDSILS LYGSQTPQMP TQAMFMAPAQ MAYPTAYPSF PGVTPPNSIM GSMMPPPVGM VAQPGASGMV APMAMPAGYM GGMQASMMGV PNGMMTTQQA GYMAGMAAMP QTVYGVQPAQ QLQWNLTQMT QQMAGMNFYG ANGMMNYGQS MSGGNGQAAN QTLSPQMWK
Characteristics:	Human SMAP1L full-length ORF ( NP_073570.1, 1 a.a. - 429 a.a.) recombinant protein with GST-tag at N-terminal.

## Product Details

---

Purification: in vitro wheat germ expression system

## Target Details

---

Target: SMAP2

Alternative Name: SMAP2 ([SMAP2 Products](#))

Background: Full Gene Name: small ArfGAP2  
Synonyms: RP1-228H13.3,SMAP1L

Gene ID: 64744

NCBI Accession: [NM\\_022733](#)

## Application Details

---

Application Notes: Optimal working dilution should be determined by the investigator.

Comment: Preparation method: in vitro, wheat germ expression system  
Product Quality tested by: 12.5% SDS-PAGE Stained with Coomassie Blue.

Restrictions: For Research Use only

## Handling

---

Buffer: 50 mM Tris-HCl, 10 mM reduced Glutathione, pH =8.0 in the elution buffer.

Handling Advice: Aliquot to avoid repeated freezing and thawing.

Storage: -80 °C

Storage Comment: Best use within three months from the date of receipt of this protein.

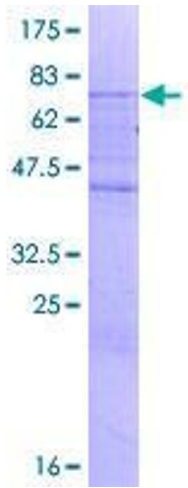


Image 1.