

Datasheet for ABIN1320667
SMCHD1 Protein (AA 1-267) (GST tag)



[Go to Product page](#)

1 Image

Overview

Quantity:	25 µg
Target:	SMCHD1
Protein Characteristics:	AA 1-267
Origin:	Human
Source:	Wheat germ
Protein Type:	Recombinant
Purification tag / Conjugate:	This SMCHD1 protein is labelled with GST tag.
Application:	Affinity Purification (AP), Antibody Array (AA), ELISA, Western Blotting (WB)

Product Details

Purpose:	SMCHD1 (Human) Recombinant Protein (P01)
Sequence:	MVISWHLASD MDCVVTLTDD AARRIYDETQ GRQQVPLDS IYKKTLPDWK RSLPHFRNGK LYFKPIGDPV FARDLLTFPD NVEHCETVFG MLLGDTIILD NLDAANHRYK EVVKITHCPT LLTRDGDRIR SNGKFGGLQN KAPPMDKLRG MVFGAPVPKQ CLILGEQIDL LQQYRSVCK LDSVNKDLNS QLEYLRTPDM RKKKQELDEH EKNLKLIIEK LGMTPIRKCND SLRHSPKVE TTDCPVPPKR MRREATRQNR IITKTDV
Characteristics:	Human SMCHD1 full-length ORF (AAH35774.1, 1 a.a. - 267 a.a.) recombinant protein with GST-tag at N-terminal.
Purification:	in vitro wheat germ expression system

Target Details

Target:	SMCHD1
Alternative Name:	SMCHD1 (SMCHD1 Products)
Background:	Full Gene Name: structural maintenance of chromosomes flexible hinge domain containing 1 Synonyms: DKFZp686O0631,KIAA0650
Gene ID:	23347

Application Details

Application Notes:	Optimal working dilution should be determined by the investigator.
Comment:	Preparation method: in vitro, wheat germ expression system Product Quality tested by: 12.5% SDS-PAGE Stained with Coomassie Blue.
Restrictions:	For Research Use only

Handling

Buffer:	50 mM Tris-HCl, 10 mM reduced Glutathione, pH =8.0 in the elution buffer.
Handling Advice:	Aliquot to avoid repeated freezing and thawing.
Storage:	-80 °C
Storage Comment:	Best use within three months from the date of receipt of this protein.

Images

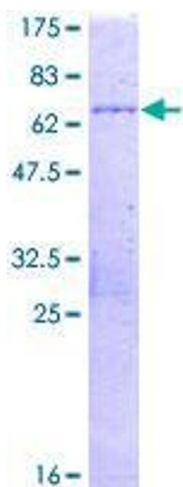


Image 1.