



[Go to Product page](#)

Datasheet for ABIN1320674

SMG1 Protein (AA 2922-3031) (GST tag)

1 Image

Overview

Quantity:	10 µg
Target:	SMG1
Protein Characteristics:	AA 2922-3031
Origin:	Human
Source:	Wheat germ
Protein Type:	Recombinant
Purification tag / Conjugate:	This SMG1 protein is labelled with GST tag.
Application:	Affinity Purification (AP), Antibody Array (AA), ELISA, Western Blotting (WB)

Product Details

Purpose:	SMG1 (Human) Recombinant Protein (Q01)
Sequence:	PDVMSQNARK LIQKNLATSA DTPPSTVPGT GKSVCSPKK AVRDPKTGKA VQERNSYAVS VWKRVKAKLE GRDVPNRRM SVAEQVDYVI KEATNLDNLA QLYEGWTAWV
Characteristics:	Human SMG1 partial ORF (NP_055535, 2922 a.a. - 3031 a.a.) recombinant protein with GST-tag at N-terminal.
Purification:	in vitro wheat germ expression system

Target Details

Target:	SMG1
Alternative Name:	SMG1 (SMG1 Products)

Target Details

Background:	Full Gene Name: SMG1 homolog, phosphatidylinositol 3-kinase-related kinase (C. elegans) Synonyms: 61E3.4,ATX,KIAA0421,LIP
Gene ID:	23049
NCBI Accession:	NM_014006
Pathways:	Inositol Metabolic Process

Application Details

Application Notes:	Optimal working dilution should be determined by the investigator.
Comment:	Preparation method: in vitro, wheat germ expression system Product Quality tested by: 12.5% SDS-PAGE Stained with Coomassie Blue.
Restrictions:	For Research Use only

Handling

Buffer:	50 mM Tris-HCl, 10 mM reduced Glutathione, pH =8.0 in the elution buffer.
Handling Advice:	Aliquot to avoid repeated freezing and thawing.
Storage:	-80 °C
Storage Comment:	Best use within three months from the date of receipt of this protein.

Images

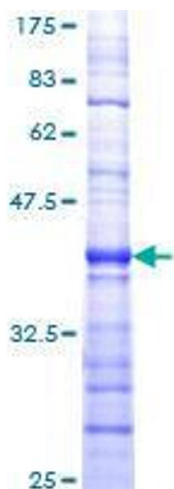


Image 1.