

Datasheet for ABIN1320688
SMO Protein (AA 653-787) (GST tag)



[Go to Product page](#)

1 Image

Overview

Quantity:	10 µg
Target:	SMO
Protein Characteristics:	AA 653-787
Origin:	Human
Source:	Wheat germ
Protein Type:	Recombinant
Purification tag / Conjugate:	This SMO protein is labelled with GST tag.
Application:	Western Blotting (WB), ELISA, Affinity Purification (AP), Antibody Array (AA)

Product Details

Purpose:	SMO (Human) Recombinant Protein (Q02)
Sequence:	NLWLVEAEIS PELQKRLGRK KRRRKRKKEV CPLAPPELH PPAPAPSTIP RLPQLPRQKC LVAAGAWGAG DSCRQGAWTL VSNPFCPEPS PPQDPFLPSA PAPVAWAHGR RQGLGPIHSR TNLMDTELMD ADSDF
Characteristics:	Human SMO partial ORF (NP_005622.1, 653 a.a. - 787 a.a.) recombinant protein with GST-tag at N-terminal.
Purification:	in vitro wheat germ expression system

Target Details

Target:	SMO
Alternative Name:	SMO (SMO Products)

Target Details

Background: Full Gene Name: smoothed homolog (Drosophila)

Synonyms: Gx,SMOH

Gene ID: 6608

NCBI Accession: [NM_005631](#)

Pathways: [Hedgehog Signaling](#)

Application Details

Application Notes: Optimal working dilution should be determined by the investigator.

Comment: Preparation method: in vitro, wheat germ expression system
Product Quality tested by: 12.5% SDS-PAGE Stained with Coomassie Blue.

Restrictions: For Research Use only

Handling

Buffer: 50 mM Tris-HCl, 10 mM reduced Glutathione, pH =8.0 in the elution buffer.

Handling Advice: Aliquot to avoid repeated freezing and thawing.

Storage: -80 °C

Storage Comment: Best use within three months from the date of receipt of this protein.

Images

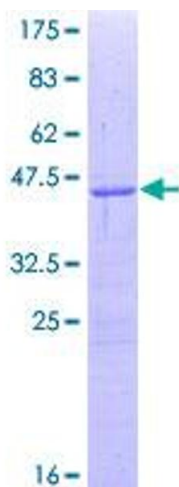


Image 1.