



[Go to Product page](#)

Datasheet for ABIN1320718

SMTNL2 Protein (AA 1-317) (GST tag)

1 Image

Overview

Quantity:	10 µg
Target:	SMTNL2
Protein Characteristics:	AA 1-317
Origin:	Human
Source:	Wheat germ
Protein Type:	Recombinant
Purification tag / Conjugate:	This SMTNL2 protein is labelled with GST tag.
Application:	ELISA, Western Blotting (WB), Affinity Purification (AP), Antibody Array (AA)

Product Details

Purpose:	SMTNL2 (Human) Recombinant Protein (P01)
Sequence:	MRKTSNSCIM ENGHQPGTGP GDGPPEIAQN FSAPDPPRPR PVSLSLRLPH QPVTAITRVS DRFSGETSAA ALSPMSAATL GGLNPSPSEV ITPWTPSPSE KNSSFTWSVP SSGYGAVTAS KHSNSPPLVT PPQSPVSPQP PAITQVHRQG ERRRELVRSQ TLPRTSEAQA RKALFEKWEQ ETAAGKKGKE ARARLKRSQS FGVASASSIK QILLEWCRSK TLGYQHVDLQ NFSSSWSDGM AFCALVHSFF PDAFDYNSLS PTQRQKNFEL AFTMAENLAN CERLIEVEDM MVMGRKPDPM CVFTYVQSLY NHLRRFE
Characteristics:	Human SMTNL2 full-length ORF (NP_940903.1, 1 a.a. - 317 a.a.) recombinant protein with GST-tag at N-terminal.
Purification:	in vitro wheat germ expression system

Target Details

Target:	SMTNL2
Alternative Name:	SMTNL2 (SMTNL2 Products)
Background:	Full Gene Name: smoothelin-like 2 Synonyms: FLJ42461,MGC131847,MGC138382
Gene ID:	342527
NCBI Accession:	NM_198501

Application Details

Application Notes:	Optimal working dilution should be determined by the investigator.
Comment:	Preparation method: in vitro, wheat germ expression system Product Quality tested by: 12.5% SDS-PAGE Stained with Coomassie Blue.
Restrictions:	For Research Use only

Handling

Buffer:	50 mM Tris-HCl, 10 mM reduced Glutathione, pH =8.0 in the elution buffer.
Handling Advice:	Aliquot to avoid repeated freezing and thawing.
Storage:	-80 °C
Storage Comment:	Best use within three months from the date of receipt of this protein.

Images

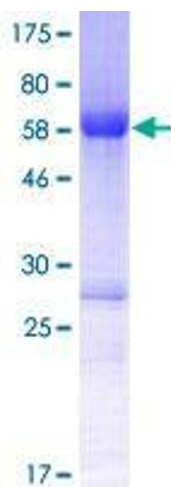


Image 1.