

Datasheet for ABIN1320736
SMYD5 Protein (AA 1-302) (GST tag)



[Go to Product page](#)

1 Image

Overview

Quantity:	10 µg
Target:	SMYD5
Protein Characteristics:	AA 1-302
Origin:	Human
Source:	Wheat germ
Protein Type:	Recombinant
Purification tag / Conjugate:	This SMYD5 protein is labelled with GST tag.
Application:	ELISA, Western Blotting (WB), Affinity Purification (AP), Antibody Array (AA)

Product Details

Purpose:	SMYD5 (Human) Recombinant Protein (P01)
Sequence:	MYCSAECRLA ATEQYHQVLC PGPSQDDPLH PLNKLQEAWR SIHYPPETAS IMLMARMVAT VKQAKDKDRW IRLFSQFCNK TANEEEEIVH KLLGDKFKGQ LELLRRLFTE ALYEEAVSQW FTPDGFRSLF ALVGTNGQGI GTSSLSQWVH ACDTLELKPQ DREQLDAFID QLYKDIEAAT GEFLNCEGSG LFLVQSCCNH SCVPNAETSF PENNFLLHVT ALEDIKPGEE ICISYLDCCQ RERSRHSRHK ILRENYLFVC SCPKCLAEAD EPNVTSEEEE EEEEEEGEP EDAELGDEMT DV
Characteristics:	Human SMYD5 full-length ORF (NP_006053.1, 1 a.a. - 302 a.a.) recombinant protein with GST-tag at N-terminal.
Purification:	in vitro wheat germ expression system

Target Details

Target:	SMYD5
Alternative Name:	SMYD5 (SMYD5 Products)
Background:	Full Gene Name: SMYD family member 5 Synonyms: NN8-4AG,RAI15,RRG1,ZMYND23
Gene ID:	10322
NCBI Accession:	NM_006062

Application Details

Application Notes:	Optimal working dilution should be determined by the investigator.
Comment:	Preparation method: in vitro, wheat germ expression system Product Quality tested by: 12.5% SDS-PAGE Stained with Coomassie Blue.
Restrictions:	For Research Use only

Handling

Buffer:	50 mM Tris-HCl, 10 mM reduced Glutathione, pH =8.0 in the elution buffer.
Handling Advice:	Aliquot to avoid repeated freezing and thawing.
Storage:	-80 °C
Storage Comment:	Best use within three months from the date of receipt of this protein.

Images

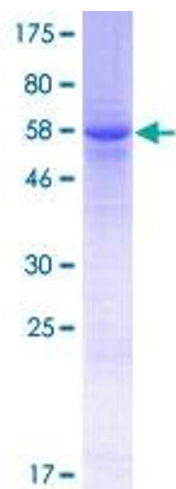


Image 1.