

Datasheet for ABIN1320755
SNAP91 Protein (AA 1-907) (GST tag)



[Go to Product page](#)

1 Image

Overview

Quantity:	10 µg
Target:	SNAP91
Protein Characteristics:	AA 1-907
Origin:	Human
Source:	Wheat germ
Protein Type:	Recombinant
Purification tag / Conjugate:	This SNAP91 protein is labelled with GST tag.
Application:	ELISA, Western Blotting (WB), Affinity Purification (AP), Antibody Array (AA)

Product Details

Purpose:	SNAP91 (Human) Recombinant Protein (P01)
Sequence:	MSGQTLTDRI AAAQYSVTGS AVARAVCKAT THEVMGPKKK HLDYLIQATN ETNVNIPQMA DTLFRATNS SWVVVKALV TTHHLMVHGN ERFIQYLASR NTLFNLSNFL DKSGSHGYDM STFIRRYRY LNEKAFSYRQ MAFDFARVKK GADGVMRTMA PEKLLKSMPI LQGQIDALLE FDVHPNELTN GVINAAMLL FKDLIKLFAC YNDGVINLLE KFFEMKKGQC KDALEIYKRF LTRMTRVSEF LKVAEQVGID KGDIPDLTQA PSSLMETLEQ HLNTLEGKKP GNNEGSGAPS PLSKSSPATT VTSPNSTPAK TIDTSPVVDL FATASAAVPV STSKPSSDLL DLQPDFSSGG AAAAAAPAPP PPAGGATAWG DLLGEDSLAA LSSVPSEAI SDPFAPEPTP PTTTAEIATA SASASTTTTV TAVTAEVDLF GDAFAASPGE APAASEGAAA PATPTPVAAA LDACSGNDPF APSEGSAAEA PELDLFAMKP PETSVPVWTP TASTAPPVPA TAPSPAPAVA AAAAATTAAT AAATTTTTTS AATATTAPPA LDIFGDLFES TPEVAAAPKP DAAPSIDLFS TDAFSSPPQG ASVPPESSLT ADLLSVDAFA APSPATTASP AKVDSSGVID LFGDAFGSSA SEPQPASQAA

Product Details

SSSSASADLL AGFGGSFMAP SPSVTPAQN NLLQPNFEAA FGTTTSTSSS SSFDPSVFDG
LGDLLMPTMA PAGQPAPVSM VPPSPAMAAS KALGSDLSS LASLVGNLGI SGTTTKKGDL
QWNAGEKKLT GGANWQPKVA PATWSAGVPP SAPLQGAVPP TSSVPPVAGA PSVGQPGAGF
GMPPAGTGMP MMPQQPVMFA QPMMRPPFGA AAVPGTQLSP SPTPASQSPK KPPAKDPLAD
LNIKDFL

Characteristics: Human SNAP91 full-length ORF (NP_055656.1, 1 a.a. - 907 a.a.) recombinant protein with GST-tag at N-terminal.

Purification: in vitro wheat germ expression system

Target Details

Target: SNAP91

Alternative Name: SNAP91 ([SNAP91 Products](#))

Background: Full Gene Name: synaptosomal-associated protein, 91 kDa homolog (mouse)
Synonyms: AP180,CALM,DKFZp78100519,KIAA0656

Gene ID: 9892

NCBI Accession: [NM_014841](#)

Application Details

Application Notes: Optimal working dilution should be determined by the investigator.

Comment: Preparation method: in vitro, wheat germ expression system
Product Quality tested by: 12.5% SDS-PAGE Stained with Coomassie Blue.

Restrictions: For Research Use only

Handling

Buffer: 50 mM Tris-HCl, 10 mM reduced Glutathione, pH =8.0 in the elution buffer.

Handling Advice: Aliquot to avoid repeated freezing and thawing.

Storage: -80 °C

Storage Comment: Best use within three months from the date of receipt of this protein.

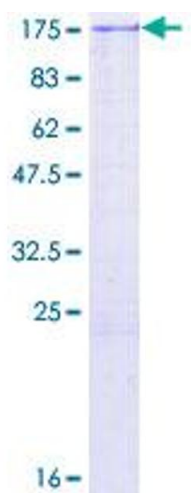


Image 1.