



[Go to Product page](#)

Datasheet for ABIN1320932

SOCS4 Protein (AA 1-440) (GST tag)

1 Image

Overview

Quantity:	10 µg
Target:	SOCS4
Protein Characteristics:	AA 1-440
Origin:	Human
Source:	Wheat germ
Protein Type:	Recombinant
Purification tag / Conjugate:	This SOCS4 protein is labelled with GST tag.
Application:	ELISA, Western Blotting (WB), Affinity Purification (AP), Antibody Array (AA)

Product Details

Purpose:	SOCS4 (Human) Recombinant Protein (P01)
Sequence:	<p>MAENNENISK NVDVRPKTSR SRSADRKDG YVWSGKKLSWS KKSESYSDAE TVNGIEKTEV SLRNQERKHS CSSIELDLDH SCGHRFLGRS LKQKLQDAVG QCFPIKNCSS RHSSGLPSKR KIHISELMLD KCPFPPRSDL AFRWHFIKRH TAPINSKSDE WVSTDLSQTE LRDGQLKRRN MEENINCFSH TNVQPCVITT DNALCREGPM TGSVMNLVSN NSIEDSDMDS DDEILTLCTS SRKRKPKWD LDDEILQLET PPKYHTQIDY VHCLVPDLLQ INNNPCYWGV MDKYAAEALL EGKPEGTFLL RDSAQEDYLF SVSFRRYSRS LHARIEQWNH NFSFDAHDPC VFHSPDITGL LEHYKDPSAC MFFEPLLSTP LIRTFPFLSQ HICRTVICNC TTYDGIDALP IPSSMKLYLK EYHYKSKVRV LRIDAPEQQC</p>
Characteristics:	Human SOCS4 full-length ORF (AAH60790, 1 a.a. - 440 a.a.) recombinant protein with GST-tag at N-terminal.

Product Details

Purification: in vitro wheat germ expression system

Target Details

Target: SOCS4

Alternative Name: SOCS4 ([SOCS4 Products](#))

Background: Full Gene Name: suppressor of cytokine signaling 4
Synonyms: DKFZp686J1568,SOCS7

Gene ID: 122809

Pathways: [JAK-STAT Signaling](#), [EGFR Signaling Pathway](#)

Application Details

Application Notes: Optimal working dilution should be determined by the investigator.

Comment: Preparation method: in vitro, wheat germ expression system
Product Quality tested by: 12.5% SDS-PAGE Stained with Coomassie Blue.

Restrictions: For Research Use only

Handling

Buffer: 50 mM Tris-HCl, 10 mM reduced Glutathione, pH =8.0 in the elution buffer.

Handling Advice: Aliquot to avoid repeated freezing and thawing.

Storage: -80 °C

Storage Comment: Best use within three months from the date of receipt of this protein.

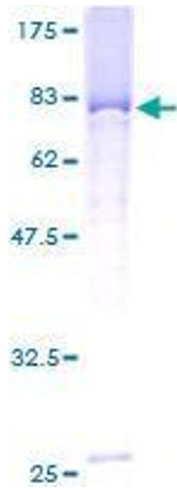


Image 1.