



[Go to Product page](#)

Datasheet for ABIN1320956

## SON Protein (AA 2301-2410) (GST tag)

### 1 Image

#### Overview

Quantity:	2 µg
Target:	SON
Protein Characteristics:	AA 2301-2410
Origin:	Human
Source:	Wheat germ
Protein Type:	Recombinant
Purification tag / Conjugate:	This SON protein is labelled with GST tag.
Application:	Affinity Purification (AP), Antibody Array (AA), ELISA, Western Blotting (WB)

#### Product Details

Purpose:	SON (Human) Recombinant Protein (Q01)
Sequence:	AAPVTGGMGA VLMRKMGWRE GEGLGKNKEG NKEPILVDFK TDRKGLVAVG ERAQKRSGNF SAAMKDLSGK HPVSALMEIC NKRRWQPPEF LLVHDSGPDH RKHFLFRVLR
Characteristics:	Human SON partial ORF ( NP_620305, 2301 a.a. - 2410 a.a.) recombinant protein with GST-tag at N-terminal.
Purification:	in vitro wheat germ expression system

#### Target Details

Target:	SON
Abstract:	<a href="#">SON Products</a>

## Target Details

Background:	Full Gene Name: SON DNA binding protein Synonyms: BASS1,C21orf50,DBP-5,FLJ21099,FLJ33914,KIAA1019,NREBP,SON3
Gene ID:	6651
NCBI Accession:	<a href="#">NM_138927</a>

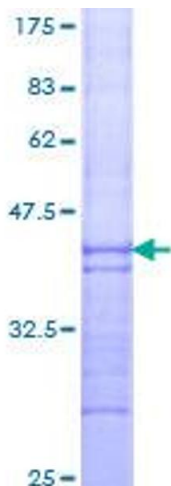
## Application Details

Application Notes:	Optimal working dilution should be determined by the investigator.
Comment:	Preparation method: in vitro, wheat germ expression system Product Quality tested by: 12.5% SDS-PAGE Stained with Coomassie Blue.
Restrictions:	For Research Use only

## Handling

Buffer:	50 mM Tris-HCl, 10 mM reduced Glutathione, pH =8.0 in the elution buffer.
Handling Advice:	Aliquot to avoid repeated freezing and thawing.
Storage:	-80 °C
Storage Comment:	Best use within three months from the date of receipt of this protein.

## Images



### SDS-PAGE

Image 1.