

Datasheet for ABIN1320973
SOS1 Protein (AA 313-420) (GST tag)



[Go to Product page](#)

1 Image

Overview

Quantity:	10 µg
Target:	SOS1
Protein Characteristics:	AA 313-420
Origin:	Human
Source:	Wheat germ
Protein Type:	Recombinant
Purification tag / Conjugate:	This SOS1 protein is labelled with GST tag.
Application:	ELISA, Western Blotting (WB), Affinity Purification (AP), Antibody Array (AA)

Product Details

Purpose:	SOS1 (Human) Recombinant Protein (Q01)
Sequence:	SQLSKPGAAL YLQSIGEGFK EAVQYVLPRL LLAPVYHCLH YFELLKQLEE KSEDQEDKEC LKQAITALLN VQSGMEKICS KSLAKRRLSE SACRFYSQQM KGKQLAIK
Characteristics:	Human SOS1 partial ORF (NP_005624, 313 a.a. - 420 a.a.) recombinant protein with GST-tag at N-terminal.
Purification:	in vitro wheat germ expression system

Target Details

Target:	SOS1
Alternative Name:	SOS1 (SOS1 Products)

Target Details

Background:	Full Gene Name: son of sevenless homolog 1 (Drosophila) Synonyms: GF1,GGF1,GINGF,HGF,NS4
Gene ID:	6654
NCBI Accession:	NM_005633
Pathways:	RTK Signaling , TCR Signaling , Fc-epsilon Receptor Signaling Pathway , EGFR Signaling Pathway , Neurotrophin Signaling Pathway , Hepatitis C , Signaling Events mediated by VEGFR1 and VEGFR2 , Signaling of Hepatocyte Growth Factor Receptor , BCR Signaling

Application Details

Application Notes:	Optimal working dilution should be determined by the investigator.
Comment:	Preparation method: in vitro, wheat germ expression system Product Quality tested by: 12.5% SDS-PAGE Stained with Coomassie Blue.
Restrictions:	For Research Use only

Handling

Buffer:	50 mM Tris-HCl, 10 mM reduced Glutathione, pH =8.0 in the elution buffer.
Handling Advice:	Aliquot to avoid repeated freezing and thawing.
Storage:	-80 °C
Storage Comment:	Best use within three months from the date of receipt of this protein.

Images

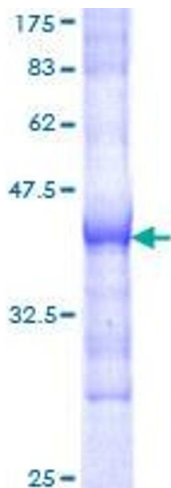


Image 1.