



[Go to Product page](#)

Datasheet for ABIN1320986

SOX13 Protein (AA 1-622) (GST tag)

1 Image

Overview

Quantity:	25 µg
Target:	SOX13
Protein Characteristics:	AA 1-622
Origin:	Human
Source:	Wheat germ
Protein Type:	Recombinant
Purification tag / Conjugate:	This SOX13 protein is labelled with GST tag.
Application:	ELISA, Western Blotting (WB), Affinity Purification (AP), Antibody Array (AA)

Product Details

Purpose:	SOX13 (Human) Recombinant Protein (P01)
Sequence:	MSMRSPISAQ LALDGVGTMV NCTIKSEEKK EPCHEAPQGS ATAAEPQPGD PARASQDSAD PQAPAQGNFR GSWDCSSPEG NGSPEPKRPG VSEAASGSQE KLDFNRNLKE VVPAIEKLLS SDWKERFLGR NSMEAKDVKG TQESLAEKEL QLLVMIHQLS TLRDQLLTAH SEQKNMAAML FEKQQQQMEL ARQQQEIAK QQQQLIQQH KINLLQQQIQ QVNMPLYVMIP AFPPSHQPLP VTPDSQLALP IQPIPCKPVE YPLQLLHSP APVVKRPGAM ATHHPLQEPS QPLNLTAKPK APELPNTSSS PSLKMSSCVP RPPSHGGPTR DLQSSPPSLP LGFLGEGDAV TKAIQDARQL LHSHSGALDG SPNTPFRKDL ISLDSSPAKE RLEDGCVHPL EEAMLSCDMD GSRHFPEARN SSHIKRPMA FMVWAKDERR KILQAFPMH NSSISKILGS RWKSMTNQE KQPYEEQARL SRQHLEKYPD KYKPRPKRT CIVEGKRLRV GEYKALMRTR RQDARQSYVI PPQAGQVQMS SSDVLYPRAA GMPLAQPLVE HYVPRSLDPN MPVIVNTCSL REEGEGTDDR HSVADGEMYR YSEDEDSEGE EKSDGELVVL TD

Product Details

Characteristics: Human SOX13 full-length ORF (NP_005677.2, 1 a.a. - 622 a.a.) recombinant protein with GST-tag at N-terminal.

Purification: in vitro wheat germ expression system

Target Details

Target: SOX13

Alternative Name: SOX13 ([SOX13 Products](#))

Background: Full Gene Name: SRY (sex determining region Y)-box 13
Synonyms: ICA12,MGC117216,Sox-13

Gene ID: 9580

NCBI Accession: [NM_005686](#)

Application Details

Application Notes: Optimal working dilution should be determined by the investigator.

Comment: Preparation method: in vitro, wheat germ expression system
Product Quality tested by: 12.5% SDS-PAGE Stained with Coomassie Blue.

Restrictions: For Research Use only

Handling

Buffer: 50 mM Tris-HCl, 10 mM reduced Glutathione, pH =8.0 in the elution buffer.

Handling Advice: Aliquot to avoid repeated freezing and thawing.

Storage: -80 °C

Storage Comment: Best use within three months from the date of receipt of this protein.

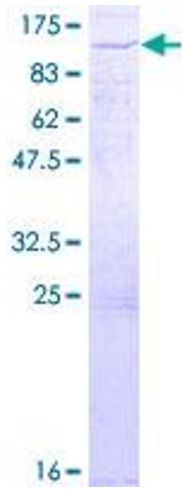


Image 1.