

Datasheet for ABIN1320995
SOX2 Protein (AA 155-245) (GST tag)



[Go to Product page](#)

1 Image

Overview

Quantity:	10 µg
Target:	SOX2
Protein Characteristics:	AA 155-245
Origin:	Human
Source:	Wheat germ
Protein Type:	Recombinant
Purification tag / Conjugate:	This SOX2 protein is labelled with GST tag.
Application:	Western Blotting (WB), ELISA, Affinity Purification (AP), Antibody Array (AA)

Product Details

Purpose:	SOX2 (Human) Recombinant Protein (Q01)
Sequence:	QRMDSYAHMN GWSNGSYSMM QDQLGYPQHP GLNAHGAAQM QPMHRYDVSA LQYNSMTSSQ TYMNGSPTYS MSYSQQGTPG MALGSMGSVV K
Characteristics:	Human SOX2 partial ORF (NP_003097, 155 a.a. - 245 a.a.) recombinant protein with GST-tag at N-terminal.
Purification:	in vitro wheat germ expression system

Target Details

Target:	SOX2
Alternative Name:	SOX2 (SOX2 Products)

Target Details

Background:	Full Gene Name: SRY (sex determining region Y)-box 2 Synonyms: ANOP3,MCOPS3,MGC2413
Gene ID:	6657
NCBI Accession:	NM_003106
Pathways:	Dopaminergic Neurogenesis , Sensory Perception of Sound , Stem Cell Maintenance , Cell RedoxHomeostasis

Application Details

Application Notes:	Optimal working dilution should be determined by the investigator.
Comment:	Preparation method: in vitro, wheat germ expression system Product Quality tested by: 12.5% SDS-PAGE Stained with Coomassie Blue.
Restrictions:	For Research Use only

Handling

Buffer:	50 mM Tris-HCl, 10 mM reduced Glutathione, pH =8.0 in the elution buffer.
Handling Advice:	Aliquot to avoid repeated freezing and thawing.
Storage:	-80 °C
Storage Comment:	Best use within three months from the date of receipt of this protein.

Images

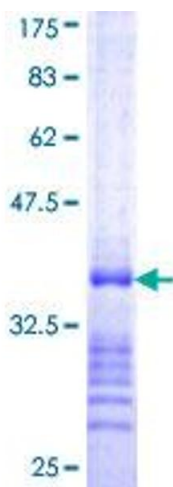


Image 1.