

Datasheet for ABIN1321025
SP140 Protein (AA 1-172) (GST tag)



[Go to Product page](#)

1 Image

Overview

Quantity:	10 µg
Target:	SP140
Protein Characteristics:	AA 1-172
Origin:	Human
Source:	Wheat germ
Protein Type:	Recombinant
Purification tag / Conjugate:	This SP140 protein is labelled with GST tag.
Application:	Western Blotting (WB), ELISA, Affinity Purification (AP), Antibody Array (AA)

Product Details

Purpose:	SP140 (Human) Recombinant Protein (P01)
Sequence:	MAQQGQQGQM ASGDSNLNFR MVAEIQNVEG QNLQEVCPE PIFRFFRENK VEIASAITRP FPFLMGLRDR SFISEQMYEH FQEAFRNLVP VTRVMYCVLS ELEKTFGWSH LEALFSRINL MAYPDLNEIY RSFQENENLSS SAVLCQLVSP NKDWRSHEES LAHTGTLRRS CM
Characteristics:	Human SP140 full-length ORF (NP_001005176.1, 1 a.a. - 172 a.a.) recombinant protein with GST-tag at N-terminal.
Purification:	in vitro wheat germ expression system

Target Details

Target:	SP140
Alternative Name:	SP140 (SP140 Products)

Target Details

Background:	Full Gene Name: SP140 nuclear body protein Synonyms: LYSP100,LYSP100-A,LYSP100-B,MGC126440
Gene ID:	11262
NCBI Accession:	NM_001005176

Application Details

Application Notes:	Optimal working dilution should be determined by the investigator.
Comment:	Preparation method: in vitro, wheat germ expression system Product Quality tested by: 12.5% SDS-PAGE Stained with Coomassie Blue.
Restrictions:	For Research Use only

Handling

Buffer:	50 mM Tris-HCl, 10 mM reduced Glutathione, pH =8.0 in the elution buffer.
Handling Advice:	Aliquot to avoid repeated freezing and thawing.
Storage:	-80 °C
Storage Comment:	Best use within three months from the date of receipt of this protein.

Images

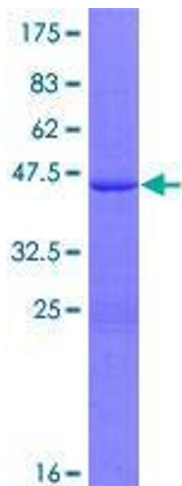


Image 1.