

Datasheet for ABIN1321034
Sp3 Protein (AA 516-615) (GST tag)



[Go to Product page](#)

1 Image

Overview

Quantity:	10 µg
Target:	Sp3
Protein Characteristics:	AA 516-615
Origin:	Human
Source:	Wheat germ
Protein Type:	Recombinant
Purification tag / Conjugate:	This Sp3 protein is labelled with GST tag.
Application:	ELISA, Western Blotting (WB), Affinity Purification (AP), Antibody Array (AA)

Product Details

Purpose:	SP3 (Human) Recombinant Protein (Q02)
Sequence:	GQLPNLQTVT VNSIDSAGIQ LHPGENADSP ADIRIKEEEP DPEEWQLSGD STLNTNDLTH LRVQVVDEEG DQQHQEGKRL RRVACTCPNC KEGGGRGTNL
Characteristics:	Human SP3 partial ORF (NP_003102.1, 516 a.a. - 615 a.a.) recombinant protein with GST tag at N-terminal.
Purification:	in vitro wheat germ expression system

Target Details

Target:	Sp3
Alternative Name:	SP3 (Sp3 Products)

Target Details

Background: Full Gene Name: Sp3 transcription factor
Synonyms: DKFZp686O1631,SPR-2

Gene ID: 6670

NCBI Accession: [NM_003111](#)

Application Details

Application Notes: Optimal working dilution should be determined by the investigator.

Comment: Preparation method: in vitro, wheat germ expression system
Product Quality tested by: 12.5% SDS-PAGE Stained with Coomassie Blue

Restrictions: For Research Use only

Handling

Buffer: 50 mM Tris-HCl, 10 mM reduced Glutathione, pH =8.0 in the elution buffer.

Handling Advice: Aliquot to avoid repeated freezing and thawing.

Storage: -80 °C

Storage Comment: Best use within three months from the date of receipt of this protein.

Images

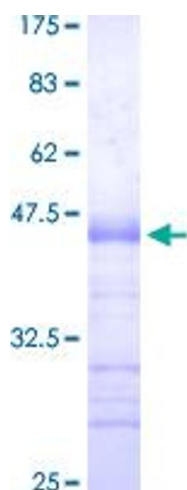


Image 1.