

Datasheet for ABIN1321048

SPACA1 Protein (AA 1-294) (GST tag)[Go to Product page](#)**1** Image

Overview

Quantity:	10 µg
Target:	SPACA1
Protein Characteristics:	AA 1-294
Origin:	Human
Source:	Wheat germ
Protein Type:	Recombinant
Purification tag / Conjugate:	This SPACA1 protein is labelled with GST tag.
Application:	ELISA, Western Blotting (WB), Affinity Purification (AP), Antibody Array (AA)

Product Details

Purpose:	SPACA1 (Human) Recombinant Protein (P01)
Sequence:	MSPRGTGCSA GLLMTVGWLL LAGLQSARGT NVTAAVQDAG LAHEGEGEEE TENNDSETAE NYAPPETEDV SNRNVVKEVE FGMCTVTCGI GVREVILTNG CPGGESKCVV RVEECRGPTD CGWGKPISES LESVRLACIH TSPLNRFKYM WKLLRQDQQS IILVNSAIL EVRKESHPLA FECDTLDNNE IVATIKFTVY TSELQMRRS SLPATDAALI FVLTIQVIIC VFIIIFLLIFI IINWAAVKAF WGAKASTPEV QSEQSSVRYK DSTSLDQLPT EMPGEDDALS EWNE
Characteristics:	Human SPACA1 full-length ORF (NP_112222.1, 1 a.a. - 294 a.a.) recombinant protein with GST-tag at N-terminal.
Purification:	in vitro wheat germ expression system

Target Details

Target:	SPACA1
Alternative Name:	SPACA1 (SPACA1 Products)
Background:	Full Gene Name: sperm acrosome associated 1 Synonyms: MGC32952,SAMP32
Gene ID:	81833
NCBI Accession:	NM_030960

Application Details

Application Notes:	Optimal working dilution should be determined by the investigator.
Comment:	Preparation method: in vitro, wheat germ expression system Product Quality tested by: 12.5% SDS-PAGE Stained with Coomassie Blue.
Restrictions:	For Research Use only

Handling

Buffer:	50 mM Tris-HCl, 10 mM reduced Glutathione, pH =8.0 in the elution buffer.
Handling Advice:	Aliquot to avoid repeated freezing and thawing.
Storage:	-80 °C
Storage Comment:	Best use within three months from the date of receipt of this protein.

Images

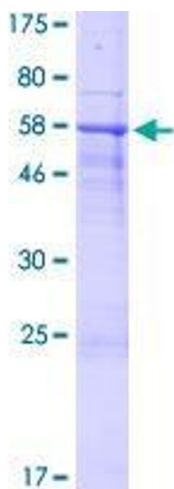


Image 1.