



[Go to Product page](#)

Datasheet for ABIN1321065

SPAG8 Protein (AA 321-421) (GST tag)

1 Image

Overview

Quantity:	10 µg
Target:	SPAG8
Protein Characteristics:	AA 321-421
Origin:	Human
Source:	Wheat germ
Protein Type:	Recombinant
Purification tag / Conjugate:	This SPAG8 protein is labelled with GST tag.
Application:	ELISA, Western Blotting (WB), Affinity Purification (AP), Antibody Array (AA)

Product Details

Purpose:	SPAG8 (Human) Recombinant Protein (Q01)
Sequence:	LKSPMPSSTT QKDSYQPPGN VYWPLRGKRE AMLEMLLQHQ ICKEVQAEQE PTRKLFEVES VTHHDYRMEL AQAGTPAPTK PHDYRQEQPE TFWIQRAPQL P
Characteristics:	Human SPAG8 partial ORF (NP_036568.1, 321 a.a. - 421 a.a.) recombinant protein with GST-tag at N-terminal.
Purification:	in vitro wheat germ expression system

Target Details

Target:	SPAG8
Alternative Name:	SPAG8 (SPAG8 Products)

Target Details

Background:	Full Gene Name: sperm associated antigen 8 Synonyms: BS-84,HSD-1,MGC26201,SMP1,SPAG3,hSMP-1
Gene ID:	26206
NCBI Accession:	NM_012436

Application Details

Application Notes:	Optimal working dilution should be determined by the investigator.
Comment:	Preparation method: in vitro, wheat germ expression system Product Quality tested by: 12.5% SDS-PAGE Stained with Coomassie Blue.
Restrictions:	For Research Use only

Handling

Buffer:	50 mM Tris-HCl, 10 mM reduced Glutathione, pH =8.0 in the elution buffer.
Handling Advice:	Aliquot to avoid repeated freezing and thawing.
Storage:	-80 °C
Storage Comment:	Best use within three months from the date of receipt of this protein.

Images

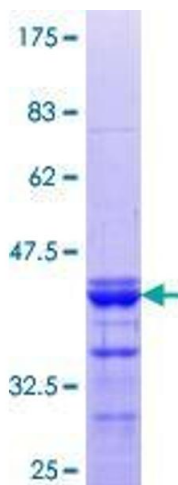


Image 1.