



[Go to Product page](#)

Datasheet for ABIN1321086

SPARCL1 Protein (AA 18-664) (GST tag)

1 Image

Overview

Quantity:	10 µg
Target:	SPARCL1
Protein Characteristics:	AA 18-664
Origin:	Human
Source:	Wheat germ
Protein Type:	Recombinant
Purification tag / Conjugate:	This SPARCL1 protein is labelled with GST tag.
Application:	Western Blotting (WB), ELISA, Affinity Purification (AP), Antibody Array (AA)

Product Details

Purpose:	SPARCL1 (Human) Recombinant Protein (P01)
Sequence:	PTNARLLSDH SKPTAETVAP DNTAIPSLRA EDEENEKETA VSTEDDSHHK AEKSSVLKSK EESHEQSAEQ GKSSSQELGL KDQEDSDGDL SVNLEYAPTE GTLDIKEDMS EPQEKKLSEN TDFLAPGVSS FTDSNQESI TKREENQEQP RNYSHHQLNR SSKHSQGLRD QGNQEQDPNI SNGEEEEKE PGEVGTHTNDN QERKTELPRE HANSKQEEDN TQSDDILEES DQPTQVSKMQ EDEFDQGNQE QEDNSNAEME EENASNVNKH IQETEWQSQE GKTGLEAISN HKETEEKTVS EALLMEPTDD GNTTPRNHGV DDDGDDDGDD GGTGPRHSA SDDYFIPSQA FLEAERAQSI AYHLKIEEQR EKVHENENIG TTEPGEHQEA KKAENSSNEE ETSSEGMRV HAVDSCMSFQ CKRGHICKAD QGKPHVCVQ DPVTCPTKP LDQVCGTDNQ TYASSCHLFA TKCRLEGTKK GHQLQLDYFG ACKSIPTCTD FEVIQFPLRM RDWLKNILMQ LYEANSEHAG YLNEKQRNKV KKIYLDEKRL LAGDHPIDLL LRDFKKNYHM YVYPVHWQFS ELDQHMPDRV LTHSELAPLR ASLVPMEHCI TRFFEECDPN KDKHITLKEW GHCFGIKEED IDENLLF

Product Details

Characteristics:	Human SPARCL1 full-length ORF (AAH33721, 18 a.a. - 664 a.a.) recombinant protein with GST-tag at N-terminal.
Purification:	in vitro wheat germ expression system

Target Details

Target:	SPARCL1
Alternative Name:	SPARCL1 (SPARCL1 Products)
Background:	Full Gene Name: SPARC-like 1 (hevin) Synonyms: PIG33,SC1
Gene ID:	8404

Application Details

Application Notes:	Optimal working dilution should be determined by the investigator.
Comment:	Preparation method: in vitro, wheat germ expression system Product Quality tested by: 12.5% SDS-PAGE Stained with Coomassie Blue.
Restrictions:	For Research Use only

Handling

Buffer:	50 mM Tris-HCl, 10 mM reduced Glutathione, pH =8.0 in the elution buffer.
Handling Advice:	Aliquot to avoid repeated freezing and thawing.
Storage:	-80 °C
Storage Comment:	Best use within three months from the date of receipt of this protein.

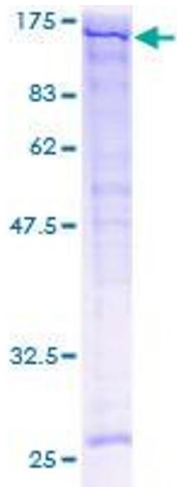


Image 1.