



[Go to Product page](#)

Datasheet for ABIN1321099

SPATA2 Protein (AA 1-520) (GST tag)

1 Image

Overview

Quantity:	10 µg
Target:	SPATA2
Protein Characteristics:	AA 1-520
Origin:	Human
Source:	Wheat germ
Protein Type:	Recombinant
Purification tag / Conjugate:	This SPATA2 protein is labelled with GST tag.
Application:	ELISA, Western Blotting (WB), Affinity Purification (AP), Antibody Array (AA)

Product Details

Purpose:	SPATA2 (Human) Recombinant Protein (P01)
Sequence:	MGKPSSMDTK FKDDLFRKYV QFHESKVDTT TSRQRPGSDE CLRVAASTLL SLHKVDPFYR FRLIQFYEVV ESSLRSLSSS SLRALHGAFS MLETVGINLF LYPWKKEFRS IKTYTGPFVY YVKSTLLEED IRAILSCMGY TPELGTAYKL RELVETLQVK MVSFELFLAK VECEQMLEIH SQVKDKGYSE LDIVSERKSS AEDVRGCSDA LRRRAEGREH LTASMSRVAL QKSASERAAK DYYKPRVTKP SRSVDAIDSY WESRKPLKA SLSLRKEPVA TDVGDDLKDE IIRPSPSLLT MASSPHGSPD VLPPASPSNG PALLRGTYFS TQDDVDLYTD SEPRATYRRQ DALRPDVWLL RND AHSLYHK RSPPAKESAL SKCQSCGLSC SSSLCQRCDS LLT CPPASKP SAFPSKASTH DSL AHGASLR EKYPGQTQGL DRLPHLHSKS KPSTTPTSRC GFCNRPGATN TCTQCSKVSC DACLSAYHYD PCYKKSELHK FMPNNQLNYK STQLSHLVYR
Characteristics:	Human SPATA2 full-length ORF (NP_006029.1, 1 a.a. - 520 a.a.) recombinant protein with GST-tag at N-terminal.

Product Details

Purification: in vitro wheat germ expression system

Target Details

Target: SPATA2

Alternative Name: SPATA2 ([SPATA2 Products](#))

Background: Full Gene Name: spermatogenesis associated 2
Synonyms: FLJ13167,KIAA0757,PD1,tamo

Gene ID: 9825

NCBI Accession: [NM_006038](#)

Application Details

Application Notes: Optimal working dilution should be determined by the investigator.

Comment: Preparation method: in vitro, wheat germ expression system
Product Quality tested by: 12.5% SDS-PAGE Stained with Coomassie Blue.

Restrictions: For Research Use only

Handling

Buffer: 50 mM Tris-HCl, 10 mM reduced Glutathione, pH =8.0 in the elution buffer.

Handling Advice: Aliquot to avoid repeated freezing and thawing.

Storage: -80 °C

Storage Comment: Best use within three months from the date of receipt of this protein.

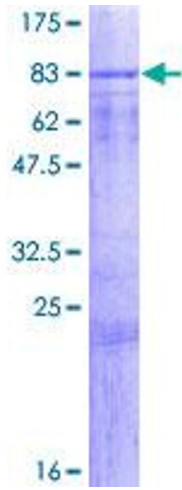


Image 1.