

Datasheet for ABIN1321103

SPATA22 Protein (AA 1-363) (GST tag)



[Go to Product page](#)

1 Image

Overview

Quantity:	25 µg
Target:	SPATA22
Protein Characteristics:	AA 1-363
Origin:	Human
Source:	Wheat germ
Protein Type:	Recombinant
Purification tag / Conjugate:	This SPATA22 protein is labelled with GST tag.
Application:	ELISA, Western Blotting (WB), Affinity Purification (AP), Antibody Array (AA)

Product Details

Purpose:	SPATA22 (Human) Recombinant Protein (P01)
Sequence:	MKRSLNENSA RSTAGCLPVP LFNQKKRNRQ PLTSNPLKDD SGISTPSDNY DFPPLPTDWA WEAVNPELAP VMKTVDTGQI PHSVSRPLRS QDSVFNSIQS NTGRSQGGWS YRDGNKNTSL KTWNKNDFKP QCKRTNLVAN DGKNSCPMSS GAQQQKQLRT PEPPNLSRNK ETELLRQTHS SKISGCTMRG LDKNSALQTL KPNFQQNQYK KQMLDDIPED NTLKETSLEYQ LQFKEKASSL RIISAVIESM KYWREHAQKT VLLFEVLAVL DSAVTPGPYY SKTFLMRDGK NTLPCVFYEI DRELPRIRG RVHRCVGNVD QKKNIFQCVS VRPASVSEQK TFQAFVKIAD VEMQYYINVM NET
Characteristics:	Human SPATA22 full-length ORF (AAH29483.1, 1 a.a. - 363 a.a.) recombinant protein with GST-tag at N-terminal.
Purification:	in vitro wheat germ expression system

Target Details

Target:	SPATA22
Alternative Name:	SPATA22 (SPATA22 Products)
Background:	Full Gene Name: spermatogenesis associated 22 Synonyms: NYD-SP20
Gene ID:	84690

Application Details

Application Notes:	Optimal working dilution should be determined by the investigator.
Comment:	Preparation method: in vitro, wheat germ expression system Product Quality tested by: 12.5% SDS-PAGE Stained with Coomassie Blue.
Restrictions:	For Research Use only

Handling

Buffer:	50 mM Tris-HCl, 10 mM reduced Glutathione, pH =8.0 in the elution buffer.
Handling Advice:	Aliquot to avoid repeated freezing and thawing.
Storage:	-80 °C
Storage Comment:	Best use within three months from the date of receipt of this protein.

Images

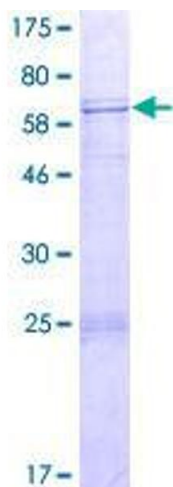


Image 1.