



[Go to Product page](#)

Datasheet for ABIN1321105

## SPATA3 Protein (AA 1-183) (GST tag)

### 1 Image

#### Overview

Quantity:	25 µg
Target:	SPATA3
Protein Characteristics:	AA 1-183
Origin:	Human
Source:	Wheat germ
Protein Type:	Recombinant
Purification tag / Conjugate:	This SPATA3 protein is labelled with GST tag.
Application:	ELISA, Western Blotting (WB), Affinity Purification (AP), Antibody Array (AA)

#### Product Details

Purpose:	SPATA3 (Human) Recombinant Protein (P01)
Sequence:	MKKVKKKRSE ARRHRDSTSQ HASSNSTSQQ PSPESTPQQP SPESTPQHSS LETTSRQPAF QALPAPEIRR SSCCLLSPDA NVKAAPQSRK AGLPTRAGPH SCSCATCPCS SACWRRGLGC HSRIFDVLLP RDWQMAPGRG LPNLLTFYRK SSRKPSSHRN ACPPSPRNCG CGSGGSRSC LHH
Characteristics:	Human SPATA3 full-length ORF ( AAH47704.1, 1 a.a. - 183 a.a.) recombinant protein with GST-tag at N-terminal.
Purification:	in vitro wheat germ expression system

#### Target Details

Target:	SPATA3
Alternative Name:	SPATA3 ( <a href="#">SPATA3 Products</a> )

## Target Details

Background: Full Gene Name: spermatogenesis associated 3  
Synonyms: TSARG1

Gene ID: 130560

## Application Details

Application Notes: Optimal working dilution should be determined by the investigator.

Comment: Preparation method: in vitro, wheat germ expression system  
Product Quality tested by: 12.5% SDS-PAGE Stained with Coomassie Blue.

Restrictions: For Research Use only

## Handling

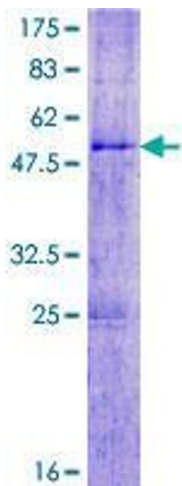
Buffer: 50 mM Tris-HCl, 10 mM reduced Glutathione, pH =8.0 in the elution buffer.

Handling Advice: Aliquot to avoid repeated freezing and thawing.

Storage: -80 °C

Storage Comment: Best use within three months from the date of receipt of this protein.

## Images



**Image 1.**