



[Go to Product page](#)

Datasheet for ABIN1321114

SPATA9 Protein (AA 1-254) (GST tag)

1 Image

Overview

Quantity:	25 µg
Target:	SPATA9
Protein Characteristics:	AA 1-254
Origin:	Human
Source:	Wheat germ
Protein Type:	Recombinant
Purification tag / Conjugate:	This SPATA9 protein is labelled with GST tag.
Application:	ELISA, Western Blotting (WB), Affinity Purification (AP), Antibody Array (AA)

Product Details

Purpose:	SPATA9 (Human) Recombinant Protein (P01)
Sequence:	MPIKPVGWIC GQVLKNFSGR IEGIQKAIMD LVDEFKDEFP TILRLSQSNQ KREPAQKTSK IRMAIALAKI NRATLIRGLN SISRSSKVA KLLHPQLACR LLELRDISGR LLREVNAPRQ PLYNIQVRKG SLFEIISFPA KTALTSIIYA SYAALIYLAV CVNAVLKKVK NIFQEEESIR QNREESENCR KAFSEPVLS PMFAEGEIKA KPYRSLPEKP DISDYPKLLA NKQSNNIQVL HSVFDQSAEM NEQI
Characteristics:	Human SPATA9 full-length ORF (NP_114158.2, 1 a.a. - 254 a.a.) recombinant protein with GST-tag at N-terminal.
Purification:	in vitro wheat germ expression system

Target Details

Target:	SPATA9
---------	--------

Target Details

Alternative Name:	SPATA9 (SPATA9 Products)
Background:	Full Gene Name: spermatogenesis associated 9 Synonyms: FLJ35906,NYD-SP16
Gene ID:	83890
NCBI Accession:	NM_031952

Application Details

Application Notes:	Optimal working dilution should be determined by the investigator.
Comment:	Preparation method: in vitro, wheat germ expression system Product Quality tested by: 12.5% SDS-PAGE Stained with Coomassie Blue.
Restrictions:	For Research Use only

Handling

Buffer:	50 mM Tris-HCl, 10 mM reduced Glutathione, pH =8.0 in the elution buffer.
Handling Advice:	Aliquot to avoid repeated freezing and thawing.
Storage:	-80 °C
Storage Comment:	Best use within three months from the date of receipt of this protein.

Images

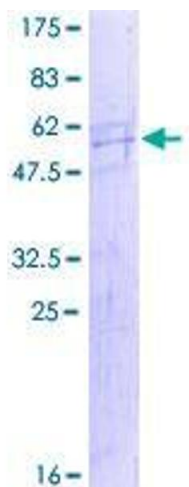


Image 1.