

Datasheet for ABIN1321120

SPATS2 Protein (AA 1-545) (GST tag)



[Go to Product page](#)

1 Image

Overview

Quantity:	25 µg
Target:	SPATS2
Protein Characteristics:	AA 1-545
Origin:	Human
Source:	Wheat germ
Protein Type:	Recombinant
Purification tag / Conjugate:	This SPATS2 protein is labelled with GST tag.
Application:	ELISA, Western Blotting (WB), Affinity Purification (AP), Antibody Array (AA)

Product Details

Purpose:	SPATS2 (Human) Recombinant Protein (P01)
Sequence:	MSRKQNQKDS SGFIFDLQSN TVLAQGGAFE NMKEKINAVR AIVPNKSNNE IILVLQHFDN CVDKTVQAFM EGSASEVLKE WTVTGGKKNK KKKNKPKPAA EPSNGIPDSS KSVSIQEEQS APSSEKGGMN GYHVNGAIND TESVDSLSEGET LETLSIDARE LEDPESAMLD TLDRTGSMLQ NGVSDFETKS LTMHSIHNSQ QPRNAAKSLS RPTTETQFSN MGMEDVPLAT SKKLSSNIEK SVKDLQRCTV SLARYRVVVK EEMDASIKKM KQAFAELESC LMDREVALLA EMDKVKAEM EILLSRQKKA ELLKKMTHVA VQMSEQLLVE LRADIKHFVS ERKYDEDLGR VARFTCDVET LKKSIDSFGQ VSHPKNSYST RSRCSSVTSV SLSSPSDASA ASSSTCASPP SLTSANKKNF APGETPAAIA NSSGQPYQPL REVLPGNRRG GQGYRPQGQK SNDPMNQGRH DSMGRYRNSS WYSSGSRYQS APSQAPGNTI ERGQTHSAGT NGTGVSMEPS PPTPSFKKGL PQRKPRTSQT EAVNS
Characteristics:	Human SPATS2 full-length ORF (AAH48299.1, 1 a.a. - 545 a.a.) recombinant protein with GST-

Product Details

tag at N-terminal.

Purification: in vitro wheat germ expression system

Target Details

Target: SPATS2

Alternative Name: SPATS2 ([SPATS2 Products](#))

Background: Full Gene Name: spermatogenesis associated, serine-rich 2
Synonyms: FLJ131117,Nbla00526,P59SCR,SCR59,SPATA10

Gene ID: 65244

Application Details

Application Notes: Optimal working dilution should be determined by the investigator.

Comment: Preparation method: in vitro, wheat germ expression system
Product Quality tested by: 12.5% SDS-PAGE Stained with Coomassie Blue.

Restrictions: For Research Use only

Handling

Buffer: 50 mM Tris-HCl, 10 mM reduced Glutathione, pH =8.0 in the elution buffer.

Handling Advice: Aliquot to avoid repeated freezing and thawing.

Storage: -80 °C

Storage Comment: Best use within three months from the date of receipt of this protein.

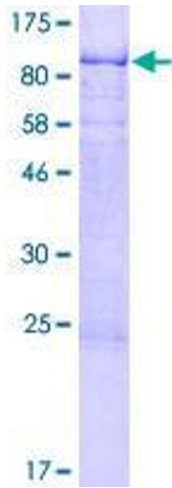


Image 1.