



[Go to Product page](#)

Datasheet for ABIN1321121

SPC24 Protein (AA 1-197) (GST tag)

1 Image

Overview

Quantity:	10 µg
Target:	SPC24
Protein Characteristics:	AA 1-197
Origin:	Human
Source:	Wheat germ
Protein Type:	Recombinant
Purification tag / Conjugate:	This SPC24 protein is labelled with GST tag.
Application:	ELISA, Western Blotting (WB), Affinity Purification (AP), Antibody Array (AA)

Product Details

Purpose:	SPC24 (Human) Recombinant Protein (P01)
Sequence:	MAAFRDIEEV SQGLLSLLGA NRAEAQRRRL LGRHEQVVER LLETQDGAEK QLREILTMEK EVAQSLNNAK EQVHQGGVEL QQLEAGLQEA GEEDTRLKAS LLQLTRELEE LKEIEADLER QEKEVDEDTT VTIPSAVYVA QLYHQVSKIE WDYECEPGMV KGIHHGPSVA QPIHLDSTQL SRKFISDYLW SLVDTEW
Characteristics:	Human SPC24 full-length ORF (NP_872319.1, 1 a.a. - 197 a.a.) recombinant protein with GST-tag at N-terminal.
Purification:	in vitro wheat germ expression system

Target Details

Target:	SPC24
---------	-------

Target Details

Alternative Name:	SPC24 (SPC24 Products)
Background:	Full Gene Name: SPC24, NDC80 kinetochore complex component, homolog (<i>S. cerevisiae</i>) Synonyms: FLJ90806, SPBC24
Gene ID:	147841
NCBI Accession:	NM_182513

Application Details

Application Notes:	Optimal working dilution should be determined by the investigator.
Comment:	Preparation method: in vitro, wheat germ expression system Product Quality tested by: 12.5% SDS-PAGE Stained with Coomassie Blue.
Restrictions:	For Research Use only

Handling

Buffer:	50 mM Tris-HCl, 10 mM reduced Glutathione, pH =8.0 in the elution buffer.
Handling Advice:	Aliquot to avoid repeated freezing and thawing.
Storage:	-80 °C
Storage Comment:	Best use within three months from the date of receipt of this protein.

Images

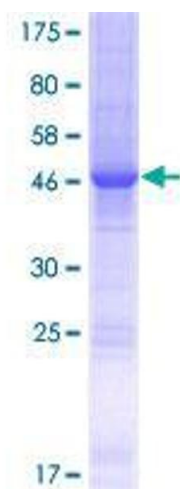


Image 1.