

Datasheet for ABIN1321130  
**SPDEF/PSE Protein (AA 1-335) (GST tag)**



[Go to Product page](#)

1 Image

Overview

Quantity:	10 µg
Target:	SPDEF/PSE (SPDEF)
Protein Characteristics:	AA 1-335
Origin:	Human
Source:	Wheat germ
Protein Type:	Recombinant
Purification tag / Conjugate:	This SPDEF/PSE protein is labelled with GST tag.
Application:	ELISA, Western Blotting (WB), Affinity Purification (AP), Antibody Array (AA)

Product Details

Purpose:	SPDEF (Human) Recombinant Protein (P01)
Sequence:	MGSASPGLSS VSPSHLLLPP DTVSRTGLEK AAAGAVGLER RDWSPSPPAT PEQGLSAFYL SYFDMLYPED SSWAAKAPGA SSREEPPEEP EQCPVIDSQA PAGSLDLVPG GLTLEEHSLE QVQSMVVGEV LKDIETACKL LNITADPMDW SPSNVQKWLL WTEHQYRLPP MGKAFQELAG KELCAMSEEQ FRQRSPLGGD VLHAHLDIWK SAAWMKERTS PGAIHYCAST SEESWTDSEV DSSCSGQPIH LWQFLKELLL KPHSYGRFIR WLNKEKGIFK IEDSAQVARL WGIRKNRPAM NYDKLSRSIR QYYKKGIIIRK PDISQLVYQ FVHPI
Characteristics:	Human SPDEF full-length ORF ( AAH21299, 1 a.a. - 335 a.a.) recombinant protein with GST-tag at N-terminal.
Purification:	in vitro wheat germ expression system

## Target Details

Target:	SPDEF/PSE (SPDEF)
Alternative Name:	SPDEF ( <a href="#">SPDEF Products</a> )
Background:	Full Gene Name: SAM pointed domain containing ets transcription factor Synonyms: PDEF,RP11-375E1__A.3,bA375E1.3
Gene ID:	25803

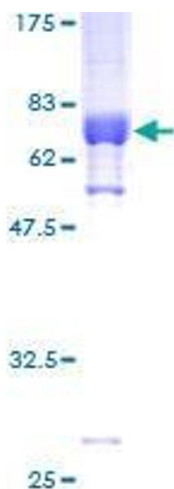
## Application Details

Application Notes:	Optimal working dilution should be determined by the investigator.
Comment:	Preparation method: in vitro, wheat germ expression system Product Quality tested by: 12.5% SDS-PAGE Stained with Coomassie Blue.
Restrictions:	For Research Use only

## Handling

Buffer:	50 mM Tris-HCl, 10 mM reduced Glutathione, pH =8.0 in the elution buffer.
Handling Advice:	Aliquot to avoid repeated freezing and thawing.
Storage:	-80 °C
Storage Comment:	Best use within three months from the date of receipt of this protein.

## Images



**Image 1.**