

Datasheet for ABIN1321134

**SPDYA Protein (AA 1-313) (GST tag)**[1 Image](#)[1 Publication](#)[Go to Product page](#)

## Overview

Quantity:	10 µg
Target:	SPDYA
Protein Characteristics:	AA 1-313
Origin:	Human
Source:	Wheat germ
Protein Type:	Recombinant
Purification tag / Conjugate:	This SPDYA protein is labelled with GST tag.
Application:	ELISA, Western Blotting (WB), Affinity Purification (AP), Antibody Array (AA)

## Product Details

Purpose:	SPDYA (Human) Recombinant Protein (P01)
Sequence:	MRHNQMCCE T PPTVTVYVKS GSNRSHQPKK PITLKRICK DNWQAFKNT HNNKSKRPK GPCLVIQRQD MTAFKLFDD DLIQDFLWMD CCCKIADKYL LAMTFVYFKR AKFTISEHTR INFFIALYLA NTVEEDEEET KYEIFPWALG KNWRKLFPNF LKLRDQLWDR IDYRAIVSRR CCEEVMAIAP THYIWQRERS VHHSGAVRNY NRDEVQLPRG PSATPVDCSL CGKKRRYVRL GLSSSSSLSS HTAGVTEKHS QDSYNSLSMD IIGDPSQAYT GSEVVNDHQS NKGKKTNFLK KDKSMEWFTG SEE
Characteristics:	Human SPDYA full-length ORF ( NP_877433.2, 1 a.a. - 313 a.a.) recombinant protein with GST-tag at N-terminal.
Purification:	in vitro wheat germ expression system

## Target Details

---

Target:	SPDYA
Alternative Name:	SPDYA ( <a href="#">SPDYA Products</a> )
Background:	Gene: speedy homolog A ( <i>Xenopus laevis</i> ) Synonyms: MGC110856, MGC57218, Ringo3, SPDY1, SPY1
Gene ID:	245711
NCBI Accession:	<a href="#">NM_182756</a>

## Application Details

---

Application Notes:	Optimal working dilution should be determined by the investigator.
Restrictions:	For Research Use only

## Handling

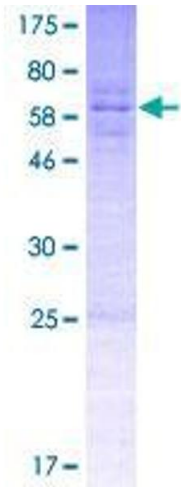
---

Buffer:	50 mM Tris-HCl, 10 mM reduced Glutathione, pH =8.0 in the elution buffer.
Handling Advice:	Aliquot to avoid repeated freezing and thawing.
Storage:	-80 °C
Storage Comment:	Best use within three months from the date of receipt of this protein.

## Publications

---

Product cited in:	Li, Sigdel, Vitalone, Lee, Sarwal: "Differential immunogenicity and clinical relevance of kidney compartment specific antigens after renal transplantation." in: <b>Journal of proteome research</b> , Vol. 9, Issue 12, pp. 6715-21, (2010) ( <a href="#">PubMed</a> ).
-------------------	--



**Image 1.**