



[Go to Product page](#)

Datasheet for ABIN1321139

SPEF2 Protein (AA 324-422) (GST tag)

1 Image

Overview

Quantity:	10 µg
Target:	SPEF2
Protein Characteristics:	AA 324-422
Origin:	Human
Source:	Wheat germ
Protein Type:	Recombinant
Purification tag / Conjugate:	This SPEF2 protein is labelled with GST tag.
Application:	Affinity Purification (AP), Antibody Array (AA), ELISA, Western Blotting (WB)

Product Details

Purpose:	FLJ23577 (Human) Recombinant Protein (Q01)
Sequence:	AQEEAYREEQ LINRLMRQSQ QERRIAVQLM HVRHEKEVLW QNRIFREKQH EERLKFQD ALDREAALAK QAKIDFEEQF LKEKRFHDQI AVERAQARY
Characteristics:	Human FLJ23577 partial ORF (NP_079143, 324 a.a. - 422 a.a.) recombinant protein with GST-tag at N-terminal.
Purification:	in vitro wheat germ expression system

Target Details

Target:	SPEF2
Alternative Name:	SPEF2 (SPEF2 Products)

Target Details

Background:	Full Gene Name: sperm flagellar 2 Synonyms: FLJ23164,FLJ23577,FLJ25395,KIAA1770,KPL2,MGC102842
Gene ID:	79925
NCBI Accession:	NM_024867

Application Details

Application Notes:	Optimal working dilution should be determined by the investigator.
Comment:	Preparation method: in vitro, wheat germ expression system Product Quality tested by: 12.5% SDS-PAGE Stained with Coomassie Blue.
Restrictions:	For Research Use only

Handling

Buffer:	50 mM Tris-HCl, 10 mM reduced Glutathione, pH =8.0 in the elution buffer.
Handling Advice:	Aliquot to avoid repeated freezing and thawing.
Storage:	-80 °C
Storage Comment:	Best use within three months from the date of receipt of this protein.

Images

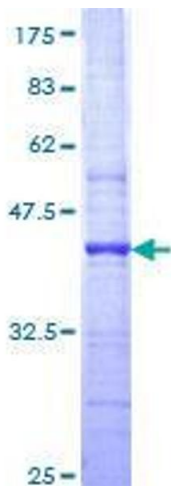


Image 1.