

Datasheet for ABIN1321156

SPG7 Protein (AA 655-754) (GST tag)[Go to Product page](#)**1** Image

Overview

Quantity:	10 µg
Target:	SPG7
Protein Characteristics:	AA 655-754
Origin:	Human
Source:	Wheat germ
Protein Type:	Recombinant
Purification tag / Conjugate:	This SPG7 protein is labelled with GST tag.
Application:	ELISA, Western Blotting (WB), Affinity Purification (AP), Antibody Array (AA)

Product Details

Purpose:	SPG7 (Human) Recombinant Protein (Q01)
Sequence:	TRIAYSMVKQ FGMAPGIGPI SFPEAQEGLM GIGRRPFSQG LQQMDHEAR LLVAKAYRHT EKVLQDNLDK LQALANALLE KEVINYEDIE ALIGPPPHGP
Characteristics:	Human SPG7 partial ORF (NP_003110, 655 a.a. - 754 a.a.) recombinant protein with GST-tag at N-terminal.
Purification:	in vitro wheat germ expression system

Target Details

Target:	SPG7
Alternative Name:	SPG7 (SPG7 Products)

Target Details

Background:	Full Gene Name: spastic paraplegia 7 (pure and complicated autosomal recessive) Synonyms: CAR,CMAR,FLJ37308,MGC126331,MGC126332,PGN,SPG5C
Gene ID:	6687
NCBI Accession:	NM_003119

Application Details

Application Notes:	Optimal working dilution should be determined by the investigator.
Comment:	Preparation method: in vitro, wheat germ expression system Product Quality tested by: 12.5% SDS-PAGE Stained with Coomassie Blue.
Restrictions:	For Research Use only

Handling

Buffer:	50 mM Tris-HCl, 10 mM reduced Glutathione, pH =8.0 in the elution buffer.
Handling Advice:	Aliquot to avoid repeated freezing and thawing.
Storage:	-80 °C
Storage Comment:	Best use within three months from the date of receipt of this protein.

Images

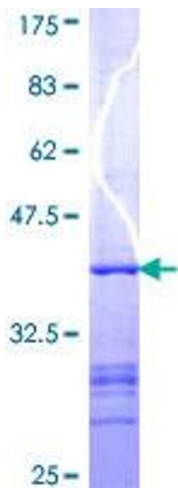


Image 1.