



[Go to Product page](#)

Datasheet for ABIN1321168

SPI1 Protein (AA 1-264) (GST tag)

1 Image

Overview

Quantity:	10 µg
Target:	SPI1
Protein Characteristics:	AA 1-264
Origin:	Human
Source:	Wheat germ
Protein Type:	Recombinant
Purification tag / Conjugate:	This SPI1 protein is labelled with GST tag.
Application:	ELISA, Western Blotting (WB), Affinity Purification (AP), Antibody Array (AA)

Product Details

Purpose:	SPI1 (Human) Recombinant Protein (P01)
Sequence:	MEGFPLVPPP SEDLVPYDTD LYQRQTHEYY PYLSSDGESH SDHYWDFHPPH HVHSEFESFA ENNFTELQSV QPPQLQLLYR HMELEQMHLV DTPMVPPHPS LGHQVSYLPR MCLQYPSLSP AQPSSDEEEG ERQSPPLEVS DGEADGLEPG PGLLPGETGS KKKIRLYQFL LDLLRSGDMK DSIWVVDKDK GTFQFSSKHK EALAHRWGIQ KGNRKKMTYQ KMARALRNYG KTGEVKKVKK KLTYQFSGEV LGRGGLAERR HPPH
Characteristics:	Human SPI1 full-length ORF (ENSP00000227163, 1 a.a. - 264 a.a.) recombinant protein with GST-tag at N-terminal.
Purification:	in vitro wheat germ expression system

Target Details

Target:	SPI1
Alternative Name:	SPI1 (SPI1 Products)
Background:	Full Gene Name: spleen focus forming virus (SFFV) proviral integration oncogene spi1 Synonyms: OF,PU.1,SFPI1,SPI-1,SPI-A
Gene ID:	6688
Pathways:	Stem Cell Maintenance

Application Details

Application Notes:	Optimal working dilution should be determined by the investigator.
Comment:	Preparation method: in vitro, wheat germ expression system Product Quality tested by: 12.5% SDS-PAGE Stained with Coomassie Blue.
Restrictions:	For Research Use only

Handling

Buffer:	50 mM Tris-HCl, 10 mM reduced Glutathione, pH =8.0 in the elution buffer.
Handling Advice:	Aliquot to avoid repeated freezing and thawing.
Storage:	-80 °C
Storage Comment:	Best use within three months from the date of receipt of this protein.

Images

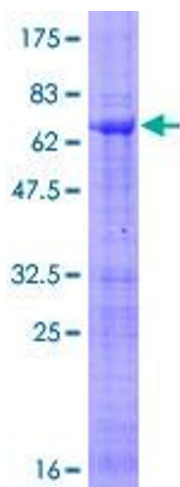


Image 1.