

Datasheet for ABIN1321189
SPINK6 Protein (AA 1-80) (GST tag)



[Go to Product page](#)

1 Image

Overview

Quantity:	10 µg
Target:	SPINK6
Protein Characteristics:	AA 1-80
Origin:	Human
Source:	Wheat germ
Protein Type:	Recombinant
Purification tag / Conjugate:	This SPINK6 protein is labelled with GST tag.
Application:	ELISA, Western Blotting (WB), Affinity Purification (AP), Antibody Array (AA)

Product Details

Purpose:	SPINK6 (Human) Recombinant Protein (P01)
Sequence:	MKLSGMFLLL SLALFCFLTG VFSQGGQVDC GEFQDTKVYC TRESNPHCGS DGQTYGNKCA FCKAIVKSGG KISLKHPGKC
Characteristics:	Human SPINK6 full-length ORF (AAH32003.1, 1 a.a. - 80 a.a.) recombinant protein with GST-tag at N-terminal.
Purification:	in vitro wheat germ expression system

Target Details

Target:	SPINK6
Alternative Name:	SPINK6 (SPINK6 Products)

Target Details

Background: Gene: serine peptidase inhibitor, Kazal type 6
Synonyms: BUSI2, MGC21394, UNQ844

Gene ID: 404203

Application Details

Application Notes: Optimal working dilution should be determined by the investigator.

Restrictions: For Research Use only

Handling

Buffer: 50 mM Tris-HCl, 10 mM reduced Glutathione, pH =8.0 in the elution buffer.

Handling Advice: Aliquot to avoid repeated freezing and thawing.

Storage: -80 °C

Storage Comment: Best use within three months from the date of receipt of this protein.

Images

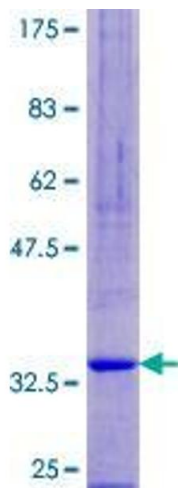


Image 1.