

Datasheet for ABIN1321231

## Osteopontin Protein (AA 1-300) (GST tag)



[Go to Product page](#)

### 1 Image

#### Overview

Quantity:	10 µg
Target:	Osteopontin (SPP1)
Protein Characteristics:	AA 1-300
Origin:	Human
Source:	Wheat germ
Protein Type:	Recombinant
Purification tag / Conjugate:	This Osteopontin protein is labelled with GST tag.
Application:	Western Blotting (WB), ELISA, Affinity Purification (AP), Antibody Array (AA)

#### Product Details

Purpose:	SPP1 (Human) Recombinant Protein (P01)
Sequence:	MRIAVICFCL LGITCAIPVK QADSGSSEEK QLYNKYPDAV ATWLNPDPSQ KQNLLAPQTL PSKSNESH DH MDDMDEDD DHVDSQDSID SNDSDDVDDT DDSHQSDSH HSDESDELVT DFPTDLPATE VFTPVVPTVD TYDGRGDSVV YGLRSKSKKF RRPDIQYPDA TDEDITSHME SEELNGAYKA IPVAQLNAP SDWDSRGKDS YETSQLDDQS AETHSHKQSR LYKRKANDES NEHSDVIDSQ ELSKVSREFH SHEFHSHEDM LVVDPKSKEE DKHLKFRISH ELESASSEVN
Characteristics:	Human SPP1 full-length ORF ( AAH07016.1, 1 a.a. - 300 a.a.) recombinant protein with GST-tag at N-terminal.
Purification:	in vitro wheat germ expression system

## Target Details

Target:	Osteopontin (SPP1)
Alternative Name:	SPP1 ( <a href="#">SPP1 Products</a> )
Background:	Full Gene Name: secreted phosphoprotein 1 Synonyms: BNSP,BSPI,ETA-1,MGC110940,OPN
Gene ID:	6696
Pathways:	<a href="#">Regulation of Cell Size</a>

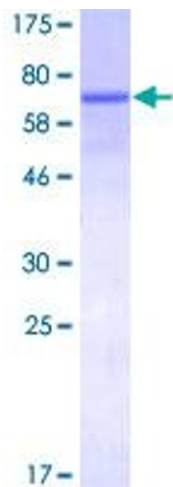
## Application Details

Application Notes:	Optimal working dilution should be determined by the investigator.
Comment:	Preparation method: in vitro, wheat germ expression system Product Quality tested by: 12.5% SDS-PAGE Stained with Coomassie Blue.
Restrictions:	For Research Use only

## Handling

Buffer:	50 mM Tris-HCl, 10 mM reduced Glutathione, pH =8.0 in the elution buffer.
Handling Advice:	Aliquot to avoid repeated freezing and thawing.
Storage:	-80 °C
Storage Comment:	Best use within three months from the date of receipt of this protein.

## Images



**Image 1.**