

Datasheet for ABIN1321233  
**Osteopontin Protein (AA 148-257) (GST tag)**



[Go to Product page](#)

1 Image

Overview

Quantity:	10 µg
Target:	Osteopontin (SPP1)
Protein Characteristics:	AA 148-257
Origin:	Human
Source:	Wheat germ
Protein Type:	Recombinant
Purification tag / Conjugate:	This Osteopontin protein is labelled with GST tag.
Application:	Western Blotting (WB), ELISA, Affinity Purification (AP), Antibody Array (AA)

Product Details

Purpose:	SPP1 (Human) Recombinant Protein (Q01)
Sequence:	SVVYGLRSKS KKFRRPDIQY PDATDEDITS HMESEELNGA YKAIPVAQDL NAPSDWDSRG KDSYETSQLD DQSAETHSHK QSRLYKRKAN DESNEHSDVI DSQELSKVSR
Characteristics:	Human SPP1 partial ORF ( NP_000573, 148 a.a. - 257 a.a.) recombinant protein with GST-tag at N-terminal.
Purification:	in vitro wheat germ expression system

Target Details

Target:	Osteopontin (SPP1)
Alternative Name:	SPP1 ( <a href="#">SPP1 Products</a> )

## Target Details

Background:	Full Gene Name: secreted phosphoprotein 1 Synonyms: BNSP,BSPI,ETA-1,MGC110940,OPN
Gene ID:	6696
NCBI Accession:	<a href="#">NM_000582</a>
Pathways:	<a href="#">Regulation of Cell Size</a>

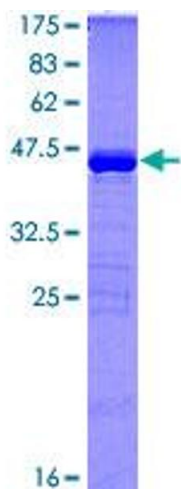
## Application Details

Application Notes:	Optimal working dilution should be determined by the investigator.
Comment:	Preparation method: in vitro, wheat germ expression system Product Quality tested by: 12.5% SDS-PAGE Stained with Coomassie Blue.
Restrictions:	For Research Use only

## Handling

Buffer:	50 mM Tris-HCl, 10 mM reduced Glutathione, pH =8.0 in the elution buffer.
Handling Advice:	Aliquot to avoid repeated freezing and thawing.
Storage:	-80 °C
Storage Comment:	Best use within three months from the date of receipt of this protein.

## Images



**Image 1.**