

Datasheet for ABIN1321235
Osteopontin Protein (AA 21-129) (GST tag)



[Go to Product page](#)

1 Image

Overview

| | |
|-------------------------------|---|
| Quantity: | 10 µg |
| Target: | Osteopontin (SPP1) |
| Protein Characteristics: | AA 21-129 |
| Origin: | Human |
| Source: | Wheat germ |
| Protein Type: | Recombinant |
| Purification tag / Conjugate: | This Osteopontin protein is labelled with GST tag. |
| Application: | Western Blotting (WB), ELISA, Affinity Purification (AP), Antibody Array (AA) |

Product Details

| | |
|------------------|--|
| Purpose: | SPP1 (Human) Recombinant Protein (Q02) |
| Sequence: | QADSGSSEEK QLYNKYPDAV ATWLNPDPSQ KQNLLAPQTL PSKSNESH DH MDDMDEDEDD DHVDSQDSID SNDSDDVDDT DDSHQSDSH HSESEDELVT DFPTDLPAT |
| Characteristics: | Human SPP1 partial ORF (NP_000573.1, 21 a.a. - 129 a.a.) recombinant protein with GST-tag at N-terminal. |
| Purification: | in vitro wheat germ expression system |

Target Details

| | |
|-------------------|--|
| Target: | Osteopontin (SPP1) |
| Alternative Name: | SPP1 (SPP1 Products) |

Target Details

| | |
|-----------------|--|
| Background: | Full Gene Name: secreted phosphoprotein 1 Synonyms: BNSP,BSPI,ETA-1,MGC110940,OPN |
| Gene ID: | 6696 |
| NCBI Accession: | NM_000582 |
| Pathways: | Regulation of Cell Size |

Application Details

| | |
|--------------------|--|
| Application Notes: | Optimal working dilution should be determined by the investigator. |
| Comment: | Preparation method: in vitro, wheat germ expression system Product Quality tested by: 12.5% SDS-PAGE Stained with Coomassie Blue. |
| Restrictions: | For Research Use only |

Handling

| | |
|------------------|---|
| Buffer: | 50 mM Tris-HCl, 10 mM reduced Glutathione, pH =8.0 in the elution buffer. |
| Handling Advice: | Aliquot to avoid repeated freezing and thawing. |
| Storage: | -80 °C |
| Storage Comment: | Best use within three months from the date of receipt of this protein. |

Images

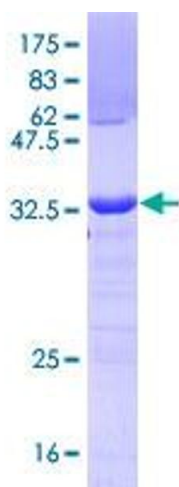


Image 1.