



[Go to Product page](#)

Datasheet for ABIN1321241

## SPR Protein (AA 164-260) (GST tag)

### 1 Image

#### Overview

Quantity:	10 µg
Target:	SPR
Protein Characteristics:	AA 164-260
Origin:	Human
Source:	Wheat germ
Protein Type:	Recombinant
Purification tag / Conjugate:	This SPR protein is labelled with GST tag.
Application:	Western Blotting (WB), ELISA, Affinity Purification (AP), Antibody Array (AA)

#### Product Details

Purpose:	SPR (Human) Recombinant Protein (Q01)
Sequence:	FKGWALYCAG KAARDMLFQV LALEEPNVRV LNYAPGPLDT DMQQLARETS VDPDMRKGLQ ELKAKGKLVD CKVSAQKLLS LLEKDEFKSG AHVDFYD
Characteristics:	Human SPR partial ORF ( NP_003115, 164 a.a. - 260 a.a.) recombinant protein with GST-tag at N-terminal.
Purification:	in vitro wheat germ expression system

#### Target Details

Target:	SPR
Alternative Name:	SPR ( <a href="#">SPR Products</a> )

## Target Details

Background:	Full Gene Name: sepiapterin reductase (7,8-dihydrobiopterin:NADP+ oxidoreductase) Synonyms: SDR38C1
Gene ID:	6697
NCBI Accession:	<a href="#">NM_003124</a>
Pathways:	<a href="#">Regulation of Systemic Arterial Blood Pressure by Hormones</a> , <a href="#">Feeding Behaviour</a> , <a href="#">Smooth Muscle Cell Migration</a>

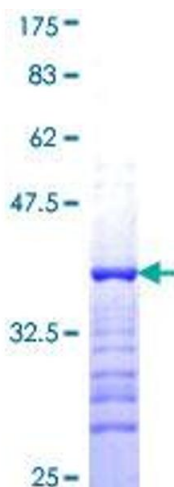
## Application Details

Application Notes:	Optimal working dilution should be determined by the investigator.
Comment:	Preparation method: in vitro, wheat germ expression system Product Quality tested by: 12.5% SDS-PAGE Stained with Coomassie Blue.
Restrictions:	For Research Use only

## Handling

Buffer:	50 mM Tris-HCl, 10 mM reduced Glutathione, pH =8.0 in the elution buffer.
Handling Advice:	Aliquot to avoid repeated freezing and thawing.
Storage:	-80 °C
Storage Comment:	Best use within three months from the date of receipt of this protein.

## Images



**Image 1.**