

Datasheet for ABIN1321290
SQLE Protein (AA 1-574) (GST tag)



[Go to Product page](#)

1 Image

Overview

Quantity:	25 µg
Target:	SQLE
Protein Characteristics:	AA 1-574
Origin:	Human
Source:	Wheat germ
Protein Type:	Recombinant
Purification tag / Conjugate:	This SQLE protein is labelled with GST tag.
Application:	Western Blotting (WB), ELISA, Affinity Purification (AP), Antibody Array (AA)

Product Details

Purpose:	SQLE (Human) Recombinant Protein (P02)
Sequence:	MWTFGLGIATF TYFYKKFGDF ITLANREVLL CVLVFSLGL VLSYRCRHRN GLLGRQQSG SQFALFSDIL SGLPFIGFFW AKSPPESENK EQLEARRRRK GTNISESLI GTAACSTSS QNDPEVIIVG AGVLGSALAA VLSRDGRKVT VIERDLKEPD RIVGEFLQPG GYHVLKDLGL GDTVEGLDAQ VVNGYMIHDQ ESKSEVQIPY PLSENNQVQS GRAFHHRFI MSLRKAAMAE PNAKFIEGVV LQLEEDDVV MGVQYKDKET GDKELHAPL TVVADGLFSK FRKSLVSNKV SVSSHVFGFL MKNAPQFKAN HAELILANPS PVLIIQISS ETRVLVDIRG EMPRNLREYM VEKIYPQIPD HLKEPFLEAT DNSHLRSMPT SFLPPSSVKK RGVLLGDAY NMRHPLTGGG MTVAFKDIKL WRKLLKGIPD LYDDAAIFEA KKSFYWARKT SHSFVNNILA QALYELFSAT DDSLHQLRKA CFLYFKLGGG CVAGPVGLLS VLSPNPLVLI GHFFAVAIYA VYFCFKSEPW ITKPRALLSS GAVLYKACSV IFPLIYSEMK YMVH
Characteristics:	Human SQLE full-length ORF (NP_003120.2, 1 a.a. - 574 a.a.) recombinant protein with GST-tag

Product Details

at N-terminal.

Purification: in vitro wheat germ expression system

Target Details

Target: SQLE

Alternative Name: SQLE ([SQLE Products](#))

Background: Full Gene Name: squalene epoxidase
Synonyms: FLJ30795

Gene ID: 6713

NCBI Accession: [NM_003129](#)

Application Details

Application Notes: Optimal working dilution should be determined by the investigator.

Comment: Preparation method: in vitro, wheat germ expression system
Product Quality tested by: 12.5% SDS-PAGE Stained with Coomassie Blue.

Restrictions: For Research Use only

Handling

Buffer: 50 mM Tris-HCl, 10 mM reduced Glutathione, pH =8.0 in the elution buffer.

Handling Advice: Aliquot to avoid repeated freezing and thawing.

Storage: -80 °C

Storage Comment: Best use within three months from the date of receipt of this protein.

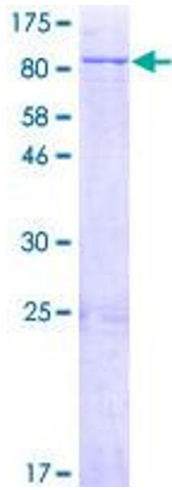


Image 1.