

Datasheet for ABIN1321291

## SQRDL Protein (AA 1-450) (GST tag)



[Go to Product page](#)

### 1 Image

#### Overview

Quantity:	10 µg
Target:	SQRDL
Protein Characteristics:	AA 1-450
Origin:	Human
Source:	Wheat germ
Protein Type:	Recombinant
Purification tag / Conjugate:	This SQRDL protein is labelled with GST tag.
Application:	Affinity Purification (AP), Antibody Array (AA), ELISA, Western Blotting (WB)

#### Product Details

Purpose:	SQRDL (Human) Recombinant Protein (P01)
Sequence:	MVPLVAVVSG PRAQLFACLL RLGTQQVGPL QLHTGASHAA RNHYEVLVLG GGSGGITMAA RMKRKVGAEEN VAIVEPSEH FYQPIWTLVG AGAKQLSSSG RPTASVIPSG VEWIKARVTE LNPDKNCIHT DDDEKISYRY LIALGIQLD YEKIKGLPEG FAHPKIGSNY SVKTVEKTKW ALQDFKEGNA IFTFPNTPVK CAGAPQKIMY LSEAYFRKTG KRSKANIIFN TSLGAIFGVK KYADALQEII QERNLTVNYK KNLIEVRADK QEAVFENLDK PGETQVISYE MLHVTPPMSP PDVLKTSPVA DAAGWVDVVK ETLQHRRYPN VFGIGDCTNL PTSKTAAAVA AQSGILDRTI SVIMKNQTPT KKYDGYTSCP LVTGYNRVIL AEFDYKAEPL ETPFDQSKE RLSMYLMKAD LMPFLYWNMM LRGYWGGPAF LRKLFHLGMS
Characteristics:	Human SQRDL full-length ORF ( NP_067022.1, 1 a.a. - 450 a.a.) recombinant protein with GST-tag at N-terminal.

## Product Details

---

Purification: in vitro wheat germ expression system

## Target Details

---

Target: SQRDL

Alternative Name: SQRDL ([SQRDL Products](#))

Background: Full Gene Name: sulfide quinone reductase-like (yeast)  
Synonyms: CGI-44

Gene ID: 58472

NCBI Accession: [NM\\_021199](#)

## Application Details

---

Application Notes: Optimal working dilution should be determined by the investigator.

Comment: Preparation method: in vitro, wheat germ expression system  
Product Quality tested by: 12.5% SDS-PAGE Stained with Coomassie Blue.

Restrictions: For Research Use only

## Handling

---

Buffer: 50 mM Tris-HCl, 10 mM reduced Glutathione, pH =8.0 in the elution buffer.

Handling Advice: Aliquot to avoid repeated freezing and thawing.

Storage: -80 °C

Storage Comment: Best use within three months from the date of receipt of this protein.

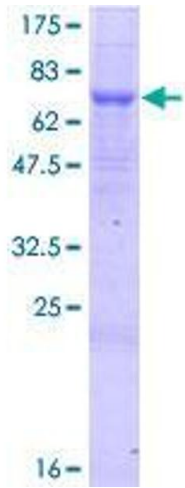


Image 1.