



[Go to Product page](#)

Datasheet for ABIN1321326

## SRI Protein (AA 1-198) (GST tag)

### 1 Image

#### Overview

Quantity:	10 µg
Target:	SRI
Protein Characteristics:	AA 1-198
Origin:	Human
Source:	Wheat germ
Protein Type:	Recombinant
Purification tag / Conjugate:	This SRI protein is labelled with GST tag.
Application:	Western Blotting (WB), ELISA, Affinity Purification (AP), Antibody Array (AA)

#### Product Details

Purpose:	SRI (Human) Recombinant Protein (P01)
Sequence:	MAYPGHPGAG GGYYPGGYGG APGGPAFPGQ TQDPLYGYFA AVAGQDGQID ADELQRCLTQ SGIAGGYKPF NLETCLMVS MLDRDMSGTM GFNEFKELWA VLNGWRQHFI SFDTDRSGTV DPQELQKALT TMGFRLSPQA VNSIAKRYST NGKITFDDYI ACCVKLRALT DSFRRRDTAQ QGVVNFYDD FIQCVMSV
Characteristics:	Human SRI full-length ORF ( AAH11025, 1 a.a. - 198 a.a.) recombinant protein with GST-tag at N-terminal.
Purification:	in vitro wheat germ expression system

#### Target Details

Target:	SRI
---------	-----

## Target Details

Alternative Name:	SRI ( <a href="#">SRI Products</a> )
Background:	Full Gene Name: sorcin Synonyms: FLJ26259,SCN
Gene ID:	6717
Pathways:	<a href="#">Transition Metal Ion Homeostasis</a> , <a href="#">Maintenance of Protein Location</a> , <a href="#">Negative Regulation of Transporter Activity</a>

## Application Details

Application Notes:	Optimal working dilution should be determined by the investigator.
Comment:	Preparation method: in vitro, wheat germ expression system Product Quality tested by: 12.5% SDS-PAGE Stained with Coomassie Blue.
Restrictions:	For Research Use only

## Handling

Buffer:	50 mM Tris-HCl, 10 mM reduced Glutathione, pH =8.0 in the elution buffer.
Handling Advice:	Aliquot to avoid repeated freezing and thawing.
Storage:	-80 °C
Storage Comment:	Best use within three months from the date of receipt of this protein.

## Images

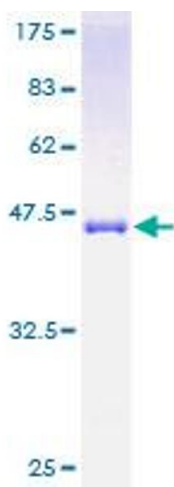


Image 1.