



[Go to Product page](#)

Datasheet for ABIN1321346

SRPK2 Protein (AA 1-689) (GST tag)

1 Image

Overview

Quantity:	10 µg
Target:	SRPK2
Protein Characteristics:	AA 1-689
Origin:	Human
Source:	Wheat germ
Protein Type:	Recombinant
Purification tag / Conjugate:	This SRPK2 protein is labelled with GST tag.
Application:	Western Blotting (WB), ELISA, Affinity Purification (AP), Antibody Array (AA)

Product Details

Purpose:	SRPK2 (Human) Recombinant Protein (P01)
Sequence:	MSVNSEKSSS SERPEPQKA PLVPPPPPPP PPPPPPLPDP TPPEPEEEIL GSDDEEQEDP ADYCKGGYHP VKIGDLFNGR YHVIRKLGWG HFSTVWLCWD MQGKRFVAMK VVKS AQHYTE TALDEIKLLK CVRES D PSDP NKDMVVQLID DFKISGMNGI HVC MVFEVLG HLLKWI IKS NYQGLPVRCV KSIIRQVLQG LDYLHCKKI IHTDIKPENI LMCVDDAYVR RMAAEATEWQ KAGAPPPSGS AVSTAPQKQP I G K I S K N K K K K L K K K Q K R Q A E L L E K R L Q E I E E L E R E A E R K I I E E N I T S A A P S N D Q D G E Y C P E V K L K T T G L E E A A E A E T A K D N G E A E D Q E E K E D A E K E N I E K D E D D V D Q E L A N I D P T W I E S P K T N G H I E N G P F S L E Q Q L D D E D D E E D C P N P E E Y N L D E P N A E S D Y T Y S S S Y E Q F N G E L P N G R H K I P E S Q F P E F S T S L F S G S L E P V A C G S V L S E G S P L T E Q E E S S P S H D R S R T V S A S S T G D L P K A K T R A A D L L V N P L D P R N A D K I R V K I A D L G N A C W V H K H F T E D I Q T R Q Y R S I E V L I G A G Y S T P A D I W S T A C M A F E L A T G D Y L F E P H S G E D Y S R D E D H I A H I I E L L G S I P R H F A L S G K Y S R E F F N R R G E L R H I T K L K P W S L F D V L V E K Y G W P H E D A A Q F T

Product Details

DFLIPMLEMV PEKRASAGEC LRHPWLNSL

Characteristics:	Human SRPK2 full-length ORF (NP_003129, 1 a.a. - 689 a.a.) recombinant protein with GST-tag at N-terminal.
Purification:	in vitro wheat germ expression system

Target Details

Target:	SRPK2
Alternative Name:	SRPK2 (SRPK2 Products)
Background:	Full Gene Name: SFRS protein kinase 2 Synonyms: FLJ36101,SFRSK2
Gene ID:	6733
NCBI Accession:	NM_003138
Pathways:	Ribonucleoprotein Complex Subunit Organization

Application Details

Application Notes:	Optimal working dilution should be determined by the investigator.
Comment:	Preparation method: in vitro, wheat germ expression system Product Quality tested by: 12.5% SDS-PAGE Stained with Coomassie Blue.
Restrictions:	For Research Use only

Handling

Buffer:	50 mM Tris-HCl, 10 mM reduced Glutathione, pH =8.0 in the elution buffer.
Handling Advice:	Aliquot to avoid repeated freezing and thawing.
Storage:	-80 °C
Storage Comment:	Best use within three months from the date of receipt of this protein.

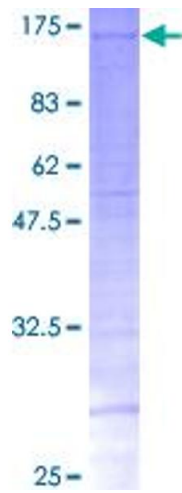


Image 1.