



[Go to Product page](#)

Datasheet for ABIN1321383

SSB Protein (AA 1-408) (GST tag)

1 Image

Overview

Quantity:	10 µg
Target:	SSB
Protein Characteristics:	AA 1-408
Origin:	Human
Source:	Wheat germ
Protein Type:	Recombinant
Purification tag / Conjugate:	This SSB protein is labelled with GST tag.
Application:	Western Blotting (WB), ELISA, Affinity Purification (AP), Antibody Array (AA)

Product Details

Purpose:	SSB (Human) Recombinant Protein (P01)
Sequence:	MAENGDNEKM AALEAKICHQ IEYFYGDFNL PRDKFLKEQI KLDEGWVPLE IMIKFNRLNR LTTDFNVIVE ALSKSKAELM EISEDKTKIR RSPSKPLPEV TDEYKNDVKN RSVYIKGFPT DATLDDIKEW LEDKGQVLNI QMRRTLHKAF KGSIFVVFDS IESAKKFVET PGQKYKETDL LILFKDDYFA KKNEERKQNK VEAKLRAKQE QEAKQKLEED AEMKSLEEKI GCLLKFSGDL DDQTCREDLH ILFSNHGEIK WIDFVRGAKE GIILFKEKAK EALGKAKDAN NGNLQLRNKE VTWEVLEGEV EKEALKKIIE DQQESLNKWK SKGRRFKGKG KGNKAAQPGS GKGKVQFQGK KTKFASDDEH DEHDENGATG PVKRAREETD KEEPASKQQK TENGAGDQ
Characteristics:	Human SSB full-length ORF (AAH01289, 1 a.a. - 408 a.a.) recombinant protein with GST-tag at N-terminal.
Purification:	in vitro wheat germ expression system

Target Details

Target:	SSB
Alternative Name:	SSB (SSB Products)
Background:	Full Gene Name: Sjogren syndrome antigen B (autoantigen La) Synonyms: LARP3,La
Gene ID:	6741

Application Details

Application Notes:	Optimal working dilution should be determined by the investigator.
Comment:	Preparation method: in vitro, wheat germ expression system Product Quality tested by: 12.5% SDS-PAGE Stained with Coomassie Blue.
Restrictions:	For Research Use only

Handling

Buffer:	50 mM Tris-HCl, 10 mM reduced Glutathione, pH =8.0 in the elution buffer.
Handling Advice:	Aliquot to avoid repeated freezing and thawing.
Storage:	-80 °C
Storage Comment:	Best use within three months from the date of receipt of this protein.

Images

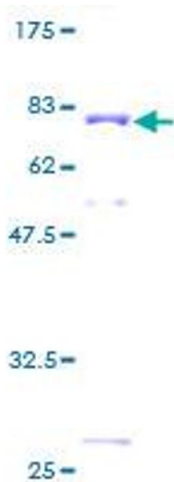


Image 1.